

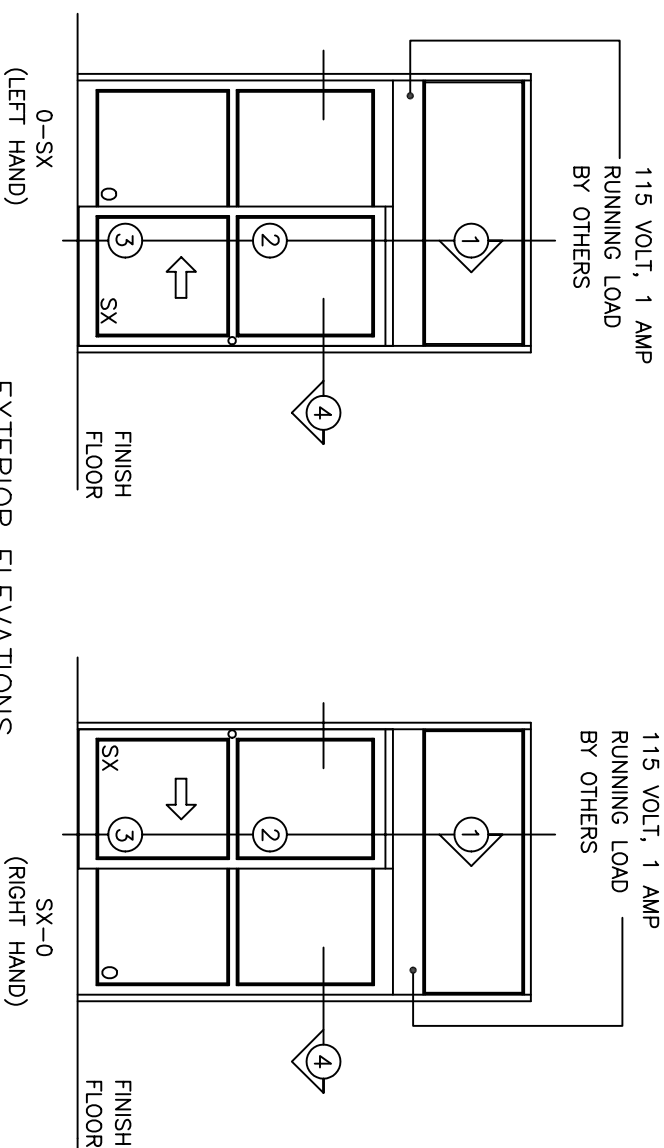
**NOTE:**

STANDARD PACKAGE:  
OPERATOR, NARROW STILE DOOR & SIDELITE, FRAMES,  
2" MUNTINS, WEATHERSTRIPPING, EMERGENCY BREAKOUT  
"SX" DOOR, STANDARD LOCK CYLINDER WITH THUMBTURN,  
4-POSITION SWITCH, 2-POSITION KEYSWITCH, MOTION SENSOR,  
PRESENCE SENSOR, DOOR HOLDING BEAMS, ANTI-JAR WHEELS,  
1/4" GLAZING SYSTEM, AND ONE PIECE 1/2" X 7-1/2"  
THRESHOLD - JAMB TO JAMB.

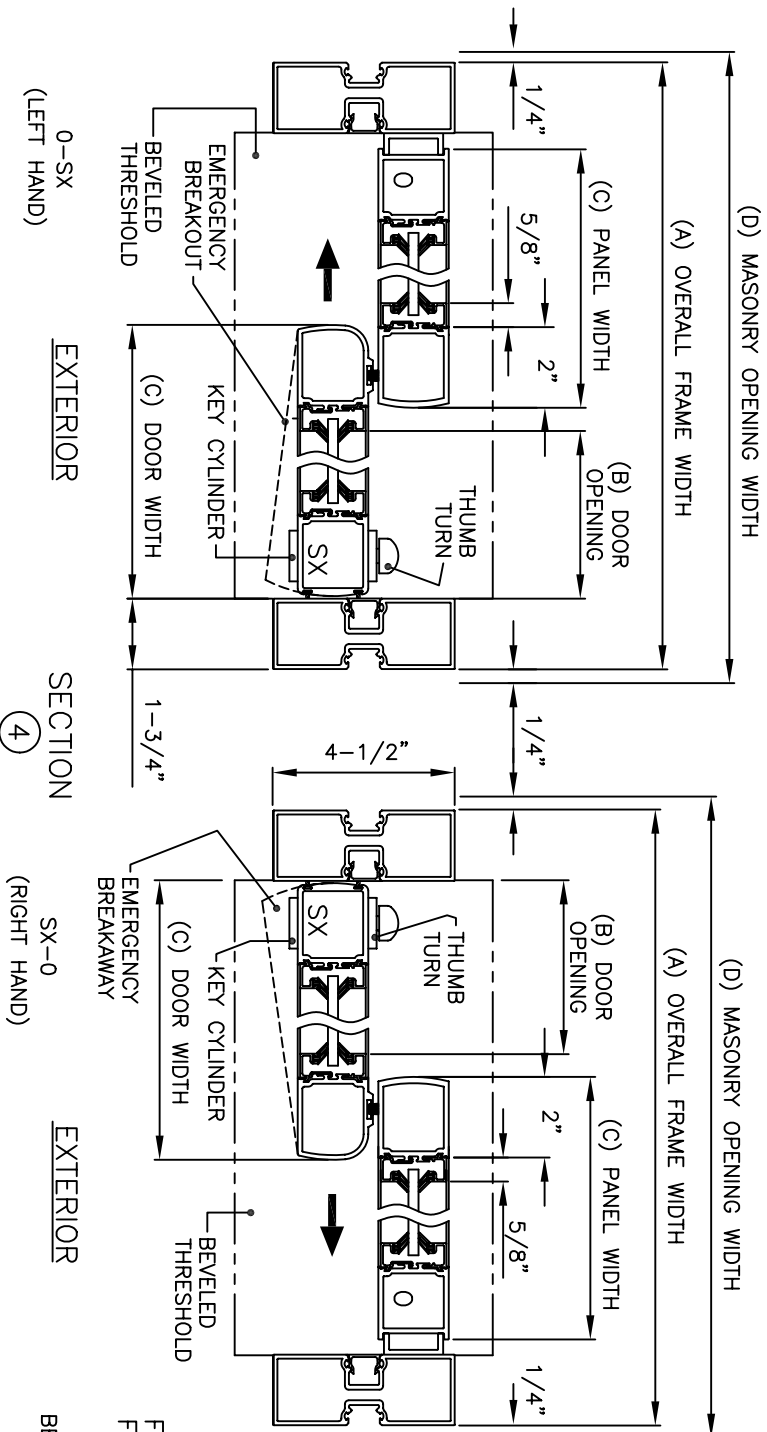
STANDARD FINISH:  
CLEAR ANODIZED - US28  
DARK BRONZE ANODIZED - DC13  
SPECIAL COLORS ARE AVAILABLE.

- \* MAX. GLASS THICKNESS IS 1"  
(GLASS STOP HEIGHT = 1-1/8").
- \* TRANSON OPTIONAL MAX. HEIGHT 6'-0"  
TOP OF HEADER TO TOP OF TRANSON.  
CONSULT FACTORY FOR LARGER SIZES.
- \* TRANSON FLUSH GLAZING OTHER THAN 1/4" GLASS  
HAS SURFACE APPLIED GLASS STOPS.
- \* ALL WRITTEN DIMENSIONS ARE TO TAKE  
PREFERENCE OVER SCALED DIMENSIONS.
- \* SIZES NOT LISTED BELOW - CONSULT WITH FACTORY.
- \* ALL ANSI DECALS ARE PROVIDED.

OVERALL FRAME WIDTH ( A )	DOOR OPENING WIDTH ( B )	DOOR/PANEL WIDTH ( C )	MASONRY OPENING WIDTH ( D )
7'-0" (MIN.)	36"	41-1/8"	7'-0 1/2"
8'-0"	42"	47-1/8"	8'-0 1/2"
8'-6"	44"	50-1/8"	8'-6 1/2"
9'-0" (MAX.)	48"	53-1/8"	9'-0 1/2"



EXTERIOR ELEVATIONS



SECTION 4

SECTION 4

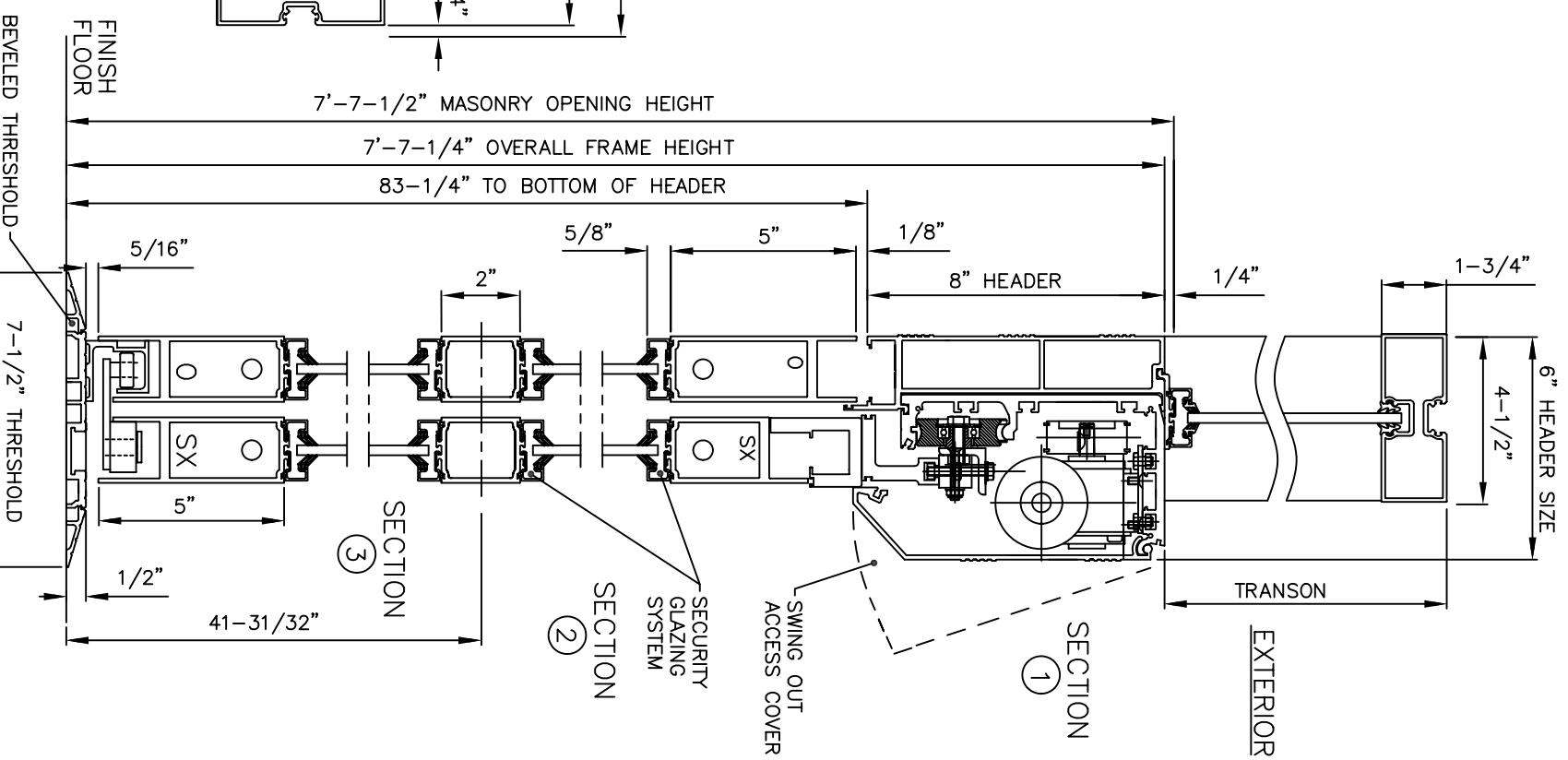
SECTION 4

SECTION 4

SECTION 4

SECTION 4

SECTION 4



SECTION 1

SECTION 2

SECTION 3

SECTION 4

SECTION 5

SECTION 6

SECTION 7

SECTION 8

SECTION 9

SECTION 10

SECTION 11

SECTION 12

SECTION 13

SECTION 14

SECTION 15

SECTION 16

SECTION 17

SECTION 18

SECTION 19

SECTION 20

SECTION 21

SECTION 22

SECTION 23

SECTION 24

SECTION 25

SECTION 26

SECTION 27

SECTION 28

SECTION 29

SECTION 30

SECTION 31

SECTION 32

SECTION 33

SECTION 34

SECTION 35

SECTION 36

SECTION 37

SECTION 38

SECTION 39

SECTION 40

SECTION 41

SECTION 42

SECTION 43

SECTION 44

SECTION 45

SECTION 46

SECTION 47

SECTION 48

SECTION 49

SECTION 50

SECTION 51

SECTION 52

SECTION 53

SECTION 54

SECTION 55

SECTION 56

SECTION 57

SECTION 58

SECTION 59

SECTION 60

SECTION 61

SECTION 62

SECTION 63

SECTION 64

SECTION 65

SECTION 66

SECTION 67

SECTION 68

SECTION 69

SECTION 70

SECTION 71

SECTION 72

SECTION 73

SECTION 74

SECTION 75

SECTION 76

SECTION 77

SECTION 78

SECTION 79

SECTION 80

SECTION 81

SECTION 82

SECTION 83

SECTION 84

SECTION 85

SECTION 86

SECTION 87

SECTION 88

SECTION 89

SECTION 90

SECTION 91

SECTION 92

SECTION 93

SECTION 94

SECTION 95

SECTION 96

SECTION 97

SECTION 98

SECTION 99

SECTION 100

SECTION 101

SECTION 102

SECTION 103

SECTION 104

SECTION 105

SECTION 106

SECTION 107

SECTION 108

SECTION 109

SECTION 110

SECTION 111

SECTION 112

SECTION 113

SECTION 114

SECTION 115

SECTION 116

SECTION 117

SECTION 118

SECTION 119

SECTION 120

SECTION 121

SECTION 122

SECTION 123

SECTION 124

SECTION 125

SECTION 126

SECTION 127

SECTION 128

SECTION 129

SECTION 130

SECTION 131

SECTION 132

SECTION 133

SECTION 134

SECTION 135

SECTION 136

SECTION 137

SECTION 138

SECTION 139

SECTION 140

SECTION 141

SECTION 142

SECTION 143

SECTION 144

SECTION 145

SECTION 146

SECTION 147

SECTION 148

SECTION 149

SECTION 150

SECTION 151

SECTION 152

SECTION 153

SECTION 154

SECTION 155

SECTION 156

SECTION 157

SECTION 158

SECTION 159

SECTION 160

SECTION 161

SECTION 162

SECTION 163

SECTION 164

SECTION 165

SECTION 166

SECTION 167

SECTION 168

SECTION 169

SECTION 170

SECTION 171

SECTION 172

SECTION 173

SECTION 174

SECTION 175

SECTION 176

SECTION 177

SECTION 178

SECTION 179

SECTION 180

SECTION 181

SECTION 182

SECTION 183

SECTION 184

SECTION 185

SECTION 186

SECTION 187

SECTION 188

SECTION 189

SECTION 190

SECTION 191

SECTION 192

SECTION 193

SECTION 194

SECTION 195

SECTION 196

SECTION 197

SECTION 198

SECTION 199

SECTION 200

SECTION 201

SECTION 202

SECTION 203

SECTION 204

SECTION 205

SECTION 206

SECTION 207

SECTION 208

SECTION 209

SECTION 210

SECTION 211

SECTION 212

SECTION 213

SECTION 214

SECTION 215

SECTION 216

SECTION 217

SECTION 218

SECTION 219

SECTION 220

SECTION 221

SECTION 222

SECTION 223

SECTION 224

SECTION 225

SECTION 226

SECTION 227

SECTION 228

SECTION 229

SECTION 230

SECTION 231

SECTION 232

SECTION 233

SECTION 234

SECTION 235

SECTION 236

SECTION 237

SECTION 238