



**96K SERIES**  
 BI-PARTING SLIDING DOORS  
 FULL BREAKOUT  
 NARROW STILE  
 RECESSED THRESHOLD

SO-SX-SX-SO

7350 West Wilson Ave.  
 Harwood Heights, IL 60706-4786

Phone: (800) 543-4635  
 Fax: (708) 867-0291

www.doromatic.com

89505REV/C  
 JUNE 18, 2003 ECN 00966

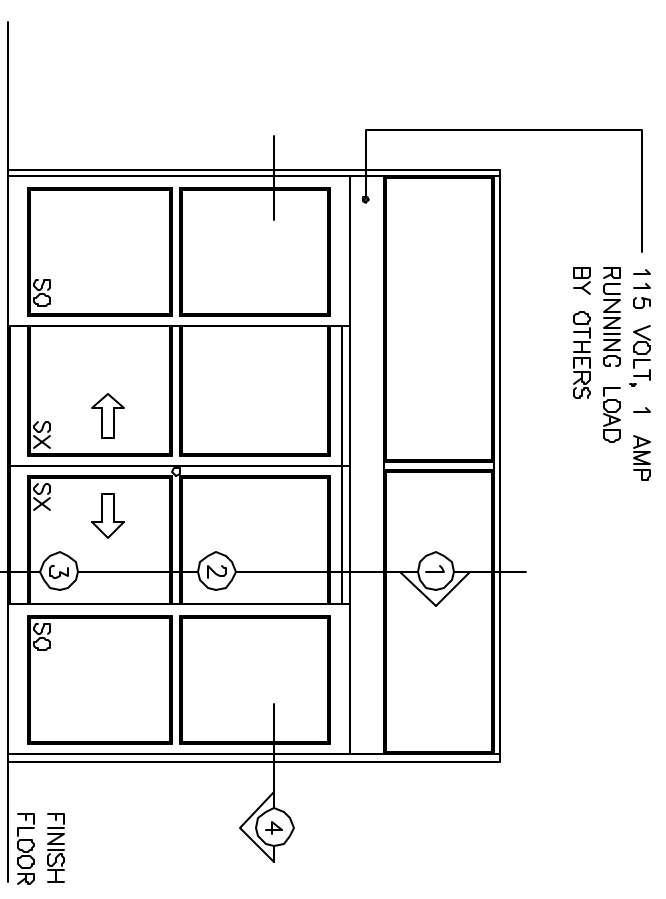
**NOTE:**

**STANDARD PACKAGE:**  
 OPERATOR, NARROW STILE DOORS & SIDELITES, FRAMES,  
 2" MUNTINS, WEATHERSTRIPPING, EMERGENCY BREAKOUT  
 ON "SX" DOOR & "SO" PANEL, STANDARD LOCK CYLINDER  
 WITH THUMBTURN, 4-POSITION SWITCH, 2-POSITION KEYSWITCH,  
 MOTION SENSOR, PRESENCE SENSOR, DOOR HOLDING BEAMS,  
 ANTI-JAR WHEELS, 1/4" GLAZING SYSTEM, AND ONE PIECE  
 1/2" X 4-1/2" THRESHOLD - JAMB TO JAMB.

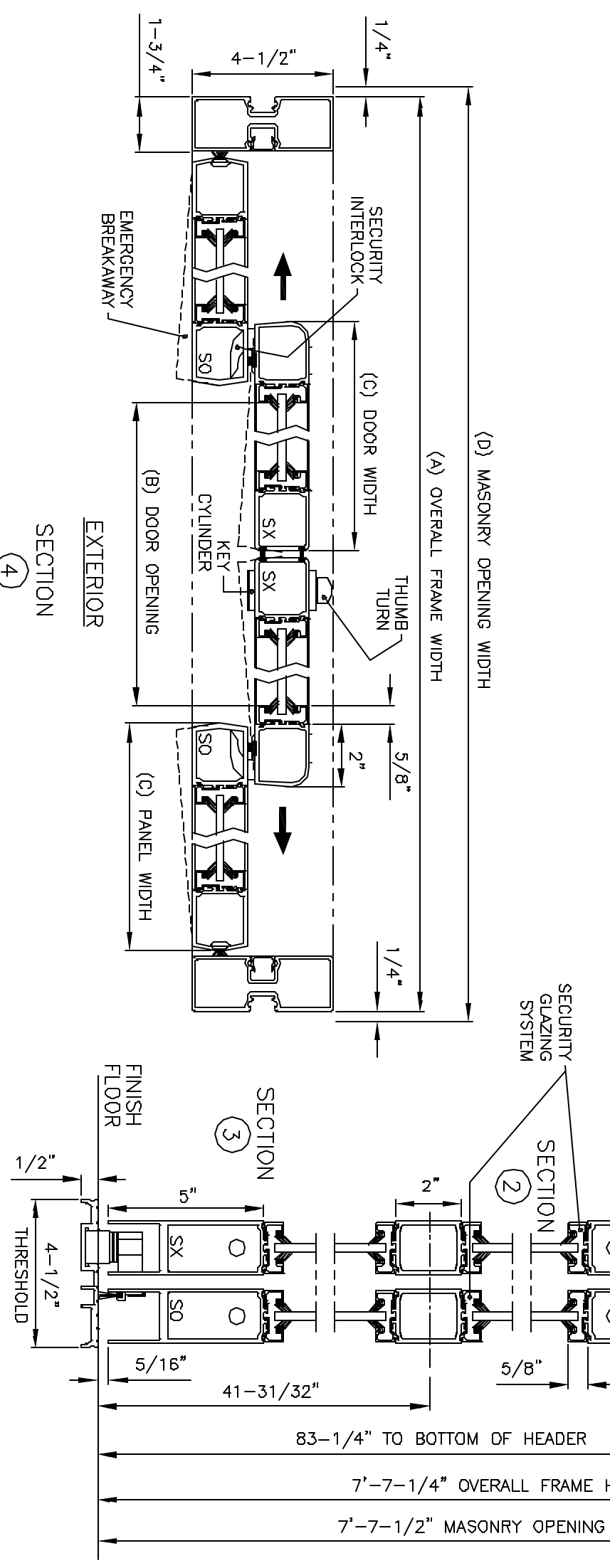
**STANDARD FINISH:**  
 CLEAR ANODIZED - US28  
 DARK BRONZE ANODIZED - DC13  
 SPECIAL COLORS ARE AVAILABLE.

- \* MAX. GLASS THICKNESS IS 5/8" ON "SO" SIDELITE AND 1" ON "SX" DOORS (GLASS STOP HEIGHT = 1-1/8").
- \* TRANSONM OPTIONAL MAX. HEIGHT 6'-0" TOP OF HEADER TO TOP OF TRANSONM. CONSULT FACTORY FOR LARGER SIZES.
- \* TRANSONM FLUSH GLAZING OTHER THAN 1/4" GLASS HAS SURFACE APPLIED GLASS STOPS.
- \* ALL WRITTEN DIMENSIONS ARE TO TAKE PREFERENCE OVER SCALED DIMENSIONS.
- \* SIZES LARGER THAN 14'-0" - CONSULT WITH FACTORY.
- \* ALL ANSI DECALS ARE PROVIDED.

OVERALL FRAME WIDTH ( A )	DOOR OPENING ( B )	DOOR/PANEL WIDTH ( C )	MASONRY OPENING WIDTH ( D )
8'-3 1/2" (MIN.)	42"	25"	8'-4"
10'-0"	48"	30"	10'-0 1/2"
12'-0"	60"	36"	12'-0 1/2"
14'-0"	72"	42"	14'-0 1/2"



EXTERIOR ELEVATION



SECTION 4

EXTERIOR