



**96K ALL GLASS**

SINGLE SLOPING DOOR  
WITH 4 POSITION KEYSWITCH  
FIXED SIDE LITE  
WITH THRESHOLD

O-SX AND SX-O

7350 West Wilson Ave.  
Harwood Heights, IL 60706-4786

Phone: (800) 543-4635  
Fax: (708) 867-0291

www.doromatic.com

OCTOBER 17, 2002  
89596REV/B  
ECN 00921

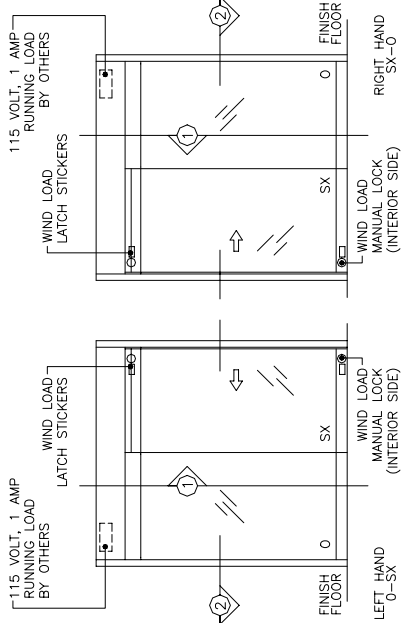
DESIGN PRESSURE RATING	WHERE WATER INFILTRATION REQUIREMENT IS NEEDED
POSITIVE	NOT APPROVED
NEGATIVE	NOT APPROVED
	+44 PSF
	-44 PSF

**NOTE:**

STANDARD PACKAGE:  
OPERATOR, FRAMES, DOOR AND PANEL CHANNELS, FOR 1/2" GLASS, ALL DOOR AND PANEL HARDWARE, WIND LOAD WEATHERSTRIPPING, EMERGENCY-BREAKOUT ON "SX" DOORS, WIND LOAD RATED LOCKS WITH THUMBTURN AND KEY CYLINDERS, ENERGY SWITCH, 4-POSITION KEYSWITCH, MOTION SENSOR, PRESENCE SENSOR, DOOR HOLDING BEAMS, ANTI-JAR WHEEL KIT, AND ONE PIECE 1/2" X 7-1/2" THRESHOLD JAMB TO JAMB.

- STANDARD FINISH:  
CLEAR ANODIZED - US28  
DARK BRONZE ANODIZED - DC13  
SPECIAL COLORS ARE AVAILABLE.
- \* MIAMI / DADE COUNTY CERTIFICATION FOR WIND LOAD RATINGS.
  - \* MAX. GLASS THICKNESS IS 1/2" TEMPERED GLASS SUPPLIED BY OTHERS.
  - \* ALL WRITTEN DIMENSIONS ARE TO TAKE PREFERENCE OVER SCALED DIMENSIONS.
  - \* SIZES NOT LISTED BELOW - CONSULT WITH FACTORY.
  - \* ALL ANSI DECALS ARE PROVIDED.

OVERALL FRAME WIDTH ( A )	DOOR OPENING ( B )	DOOR/PANEL WIDTH ( C )	DOOR/PANEL WIDTH ( D )	MASONRY OPENING WIDTH ( D )
7'-0" ( MIN. )	36"	41'-1/8"	42"	7'-0 1/2"
7'-1-1/2" ( MAX. )	36"	42"		7'-2"



**EXTERIOR ELEVATION**

