



96K HURRICANE

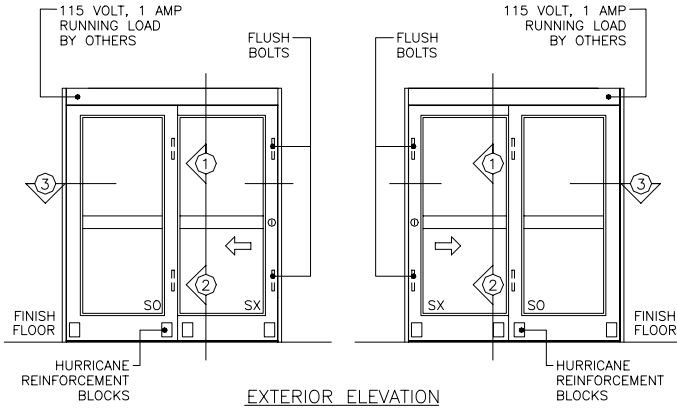
SINGLE SLIDING DOOR
HURRICANE RATED
FULL BREAKOUT
MEDIUM STILE
WITH THRESHOLD

SO-SX AND SX-SO

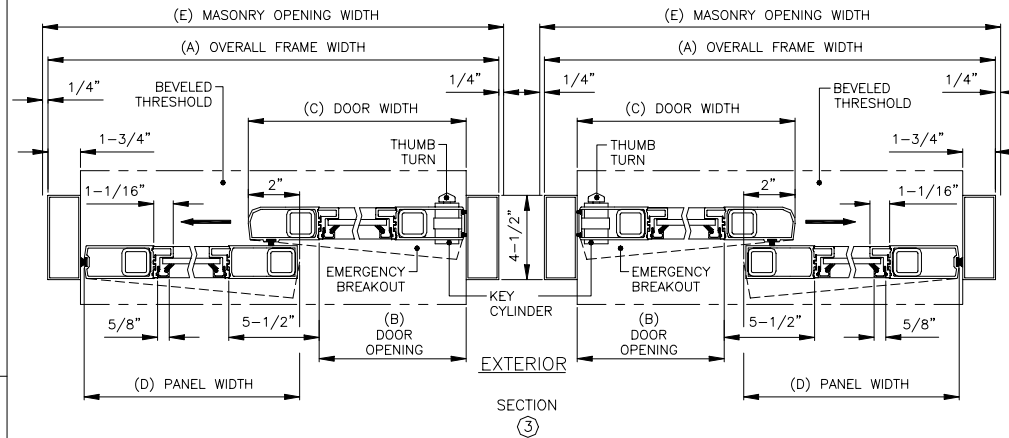
7350 West Wilson Ave.
Harwood Heights, IL. 60706-4786

Phone: (800) 543-4635
Fax: (708) 867-0291
www.doromatic.com

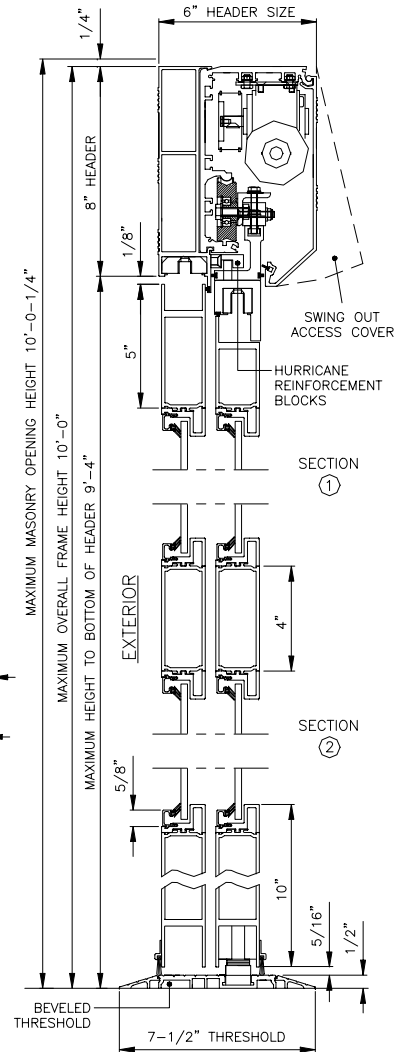
89608REVA
MAR. 13, 2002



EXTERIOR ELEVATION



SECTION 3



SECTION 1

SECTION 2

DESIGN PRESSURE RATING		
	WHERE WATER INFILTRATION REQUIREMENT IS NEEDED	WHERE WATER INFILTRATION REQUIREMENT IS NOT NEEDED
POSITIVE	NOT APPROVED	+60 PSF
NEGATIVE	NOT APPROVED	-75 PSF

NOTE:

STANDARD PACKAGE:
OPERATOR, MEDIUM STILE DOORS & SIDELITES, FRAMES, TEMPERED IMPACT GLASS, HURRICANE WEATHERSTRIPPING, EMERGENCY BREAKOUT AND FLUSH BOLTS ON "SX" DOORS AND "SO" PANELS, HURRICANE RATED LOCKS WITH THUMB-TURN AND KEY CYLINDERS, HURRICANE REINFORCEMENT BLOCKS, 4-POSITION SWITCH, MOTION SENSOR, PRESENCE SENSOR ON BOTH SIDES OF DOORS, ANTI-JAR WHEEL KIT, 1/4" GLAZING SYSTEM FOR TEMPERED IMPACT GLASS, AND ONE PIECE 1/2" X 7-1/2" THRESHOLD - JAMB TO JAMB.

STANDARD FINISH:
CLEAR ANODIZED - US28
DARK BRONZE ANODIZED - DC13
SPECIAL COLORS ARE AVAILABLE.

- * MIAMI / DADE COUNTY CERTIFICATION FOR HURRICANE RATINGS.
- * MAX. GLASS THICKNESS IS 1/4" TEMPERED GLASS.
- * ALSO AVAILABLE WITHOUT MUNTINS.
- * ALL WRITTEN DIMENSIONS ARE TO TAKE PREFERENCE OVER SCALED DIMENSIONS.
- * SIZES LARGER THAN 7'-1-1/2" - CONSULT WITH FACTORY.
- * ALL ANSI DECALS ARE PROVIDED.

OVERALL FRAME WIDTH (A)	DOOR OPENING (B)	DOOR WIDTH (C)	PANEL WIDTH (D)	MASONRY OPENING WIDTH (E)
7'-0"	36"	41-1/8"	41-1/8"	7'-0 1/2"
8'-0"	42"	47-1/8"	47-1/8"	8'-0 1/2"