

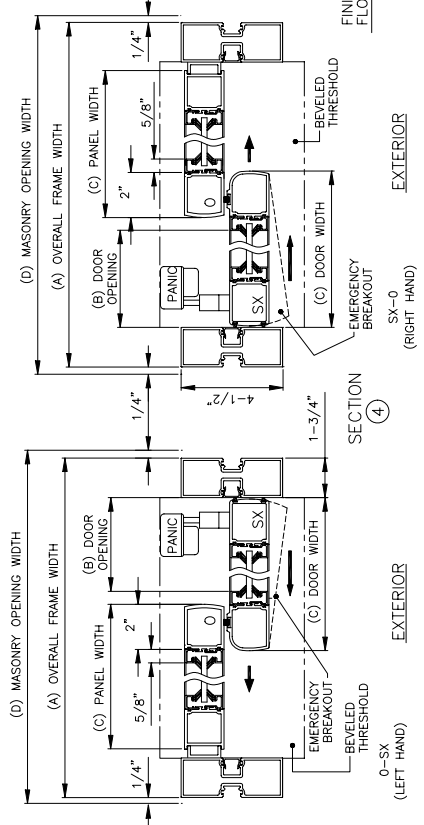
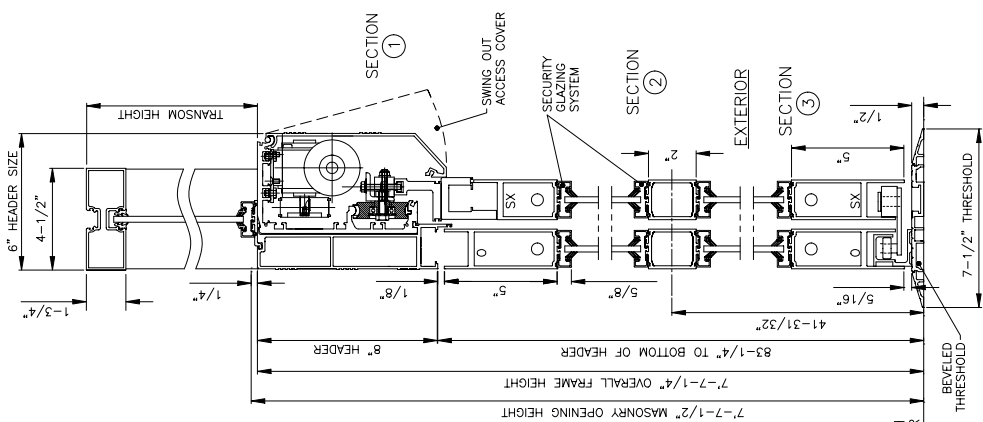
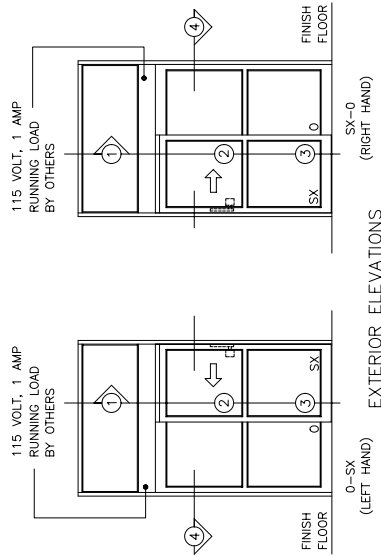
96K SERIES
SINGLE SLIDING DOOR
PADDLE, PANIC EXIT DEVICE
NARROW STILE
MASONRY SET
WITH THRESHOLD

Phone: (800) 543-4635
Fax: (708) 867-0291

7350 West Wilson Ave.
Harwood Heights, IL 60706-4786

www.doromatic.com

O-SX AND SX-O



NOTE:

STANDARD PACKAGE:
OPERATOR, NARROW STILE DOORS & SIDELITES, FRAMES
2" MUNTINS, WEATHERSTRIPPING, PADDLE PANIC EXIT DEVICE
ON LEADING STYLE OF "SX" DOOR, HYDRAULIC CLOSERS IN
"SX" DOOR, FAIL SECURE ELECTRIC LOCK, 4-POSITION SWITCH,
2-POSITION KEYSWITCH, MOTION SENSOR, PRESENCE SENSOR,
DOOR HOLDING BEAMS, ANTI-JAR WHEELS, AND ONE PIECE
1/2" X 7-1/2" THRESHOLD - JAMB TO JAMB.

STANDARD FINISH:
CLEAR ANODIZED - US28
DARK BRONZE ANODIZED - DC13
SPECIAL COLORS ARE AVAILABLE.

- * PANIC DEVICE MUST HAVE APPROVAL OF CODE OFFICIAL.
- * MAX. GLASS THICKNESS IS 1" (GLASS STOP HEIGHT = 1-1/8")
- * TRANSOM OPTIONAL MAX. HEIGHT 6"-0" TOP OF HEADER TO TOP OF TRANSOM. CONSULT FACTORY FOR LARGER SIZES.
- * TRANSOM FLUSH GLAZING OTHER THAN 1/4" GLASS HAS SURFACE APPLIED GLASS STOPS.
- * ALL WRITTEN DIMENSIONS ARE TO TAKE PREFERENCE OVER SCALED DIMENSIONS.
- * SIZES NOT LISTED BELOW - CONSULT WITH FACTORY.
- * ALL ANSI DECALS ARE PROVIDED.

OVERALL WIDTH (A)	DOOR OPENING (B)	DOOR/PANEL WIDTH (C)	MASONRY OPENING WIDTH (D)
7'-0" (MIN.)	36"	41-1/8"	7'-0 1/2"
8'-0"	42"	47-1/8"	8'-0 1/2"
8'-6"	44"	50-1/8"	8'-6 1/2"
9'-0" (MAX.)	48"	53-1/8"	9'-0 1/2"