

SINGLE SLIDING DOOR
MID-PANEL PANIC EXIT DEVICE
FULL-BREAKOUT
RECESSED THRESHOLD



SO-SX AND SX-SO

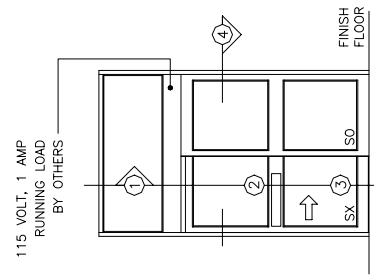
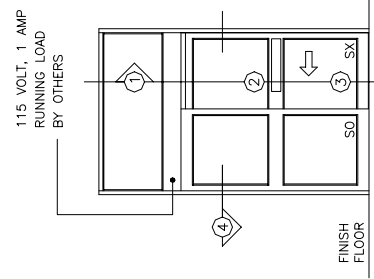
www.doromatic.com

Phone: (800) 543-4635

Fax: (708) 867-0291

7350 West Wilson Ave.

Harwood Heights, IL 60706-4786



115 VOLT, 1 AMP
RUNNING LOAD
BY OTHERS

115 VOLT, 1 AMP
RUNNING LOAD
BY OTHERS

NOTE:
STANDARD PACKAGE:
OPERATOR, NARROW STILE DOOR & SIDELITE, FRAMES, 4" MUNTINS IN "SO" PANEL, MID-PANEL PANIC EXIT DEVICE IN 4" MUNTIN ON "SX" PANEL, HYDRAULIC CLOSERS IN "SX" DOORS AND "SO" SIDELITES, FAIL SECURE ELECTRIC LOCK, 4-POSITION SWITCH, 2-POSITION KEYSWITCH, MOTION SENSOR, PRESENCE SENSOR, DOOR HOLDING BEAMS, ANTI-JAR WHEELS, 1/4" GLAZING SYSTEM, AND ONE PIECE 1/2" X 4-1/2" THRESHOLD-JAMB TO JAMB.

STANDARD FINISH:
CLEAR ANODIZED - US28
DARK BRONZE ANODIZED - DC13
SPECIAL COLORS ARE AVAILABLE.
PANIC DEVICES ARE AVAILABLE IN STANDARD FINISH, DC35, AND CHAMPAGNE.

- * DOOR WIDTHS OF 42" OR GREATER REQUIRE A 24" PANIC DEVICE. (LESS THAN 42" BUT GREATER THAN 41-1/8", REQUIRES 21" PANIC DEVICE).
- * MAX. GLASS THICKNESS IS 5/8" ON "SO" SIDELITES, AND 1" ON "SX" DOORS (GLASS STOP HEIGHT = 1-1/8").
- * TRANSOM OPTIONAL MAX. HEIGHT 6'-0" TOP OF HEADER TO TOP OF TRANSOM. CONSULT FACTORY FOR LARGER SIZES.
- * TRANSOM FLUSH GLAZED OTHER THAN 1/4" GLASS HAS SURFACE APPLIED GLASS STOPS.

* ALL WRITTEN DIMENSIONS ARE TO TAKE PREFERENCE OVER SCALED DIMENSIONS.
* SIZES NOT LISTED BELOW - CONSULT WITH FACTORY.
* ALL ANSI DECALS ARE PROVIDED.

OVERALL FRAME WIDTH (A)	DOOR OPENING (B)	DOOR/PANEL WIDTH (C)	MASONRY OPENING WIDTH (D)
7'-0" (MIN.)	36"	41-1/8"	7'-0 1/2"
8'-0"	42"	47-1/8"	8'-0 1/2"
8'-6"	44"	50-1/8"	8'-6 1/2"
9'-0" (MAX.)	48"	53-1/8"	9'-0 1/2"

