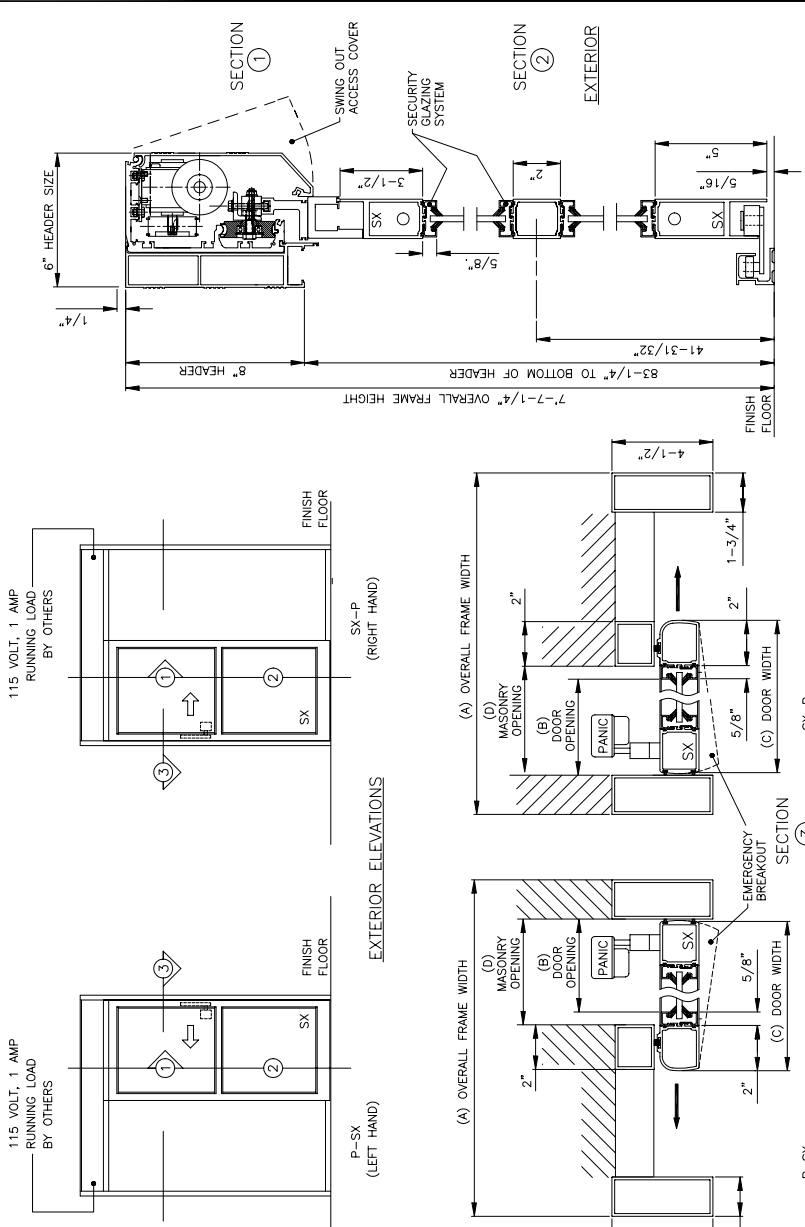


96K SERIES
SINGLE SLIDING DOOR
PADDLE PANIC EXIT DEVICE
SURFACE APPLIED
NARROW STYLE
WITHOUT THRESHOLD



7350 West Wilson Ave.
Harwood Heights, IL 60706-4786
Phone: (800) 543-4635
Fax: (708) 867-0291
www.doromatic.com

P-SX AND SX-P



EXTERIOR ELEVATIONS

NOTE:
STANDARD PACKAGE:
OPERATES THROUGH STYLE DOORS, FRAMES, 2" MUNTINS,
OPERABLE THROUGH PADDLE PANIC EXIT DEVICE ON SLIDING
STYLE OF "SX" DOOR, 4-POSITION SWITCH, 2-POSITION
KEYSWITCH, MOTION SENSOR, PRESENCE SENSOR, DOOR
HOLDING BEAMS, ANTI-JAR WHEELS, AND 1/4" GLAZING SYSTEM.

STANDARD FINISH:
CLEAR ANODIZED - US28
DARK BRONZE ANODIZED - DC13
SPECIAL COLORS ARE AVAILABLE

* ALL WRITTEN DIMENSIONS ARE TO TAKE PREFERENCE OVER SCALED DIMENSIONS.
* SIZES NOT LISTED BELOW - CONSULT WITH FACTORY.

OVERALL FRAME WIDTH (A)	DOOR OPENING WIDTH (B)	DOOR WIDTH (C)	MASONRY OPENING (D)
7'-0" (MIN.)	36"	41-1/8"	39-1/8"
8'-0"	42"	47-1/8"	45-1/8"
8'-6"	44"	50-1/8"	48-1/8"
9'-0" (MAX.)	48"	53-1/8"	51-1/8"