



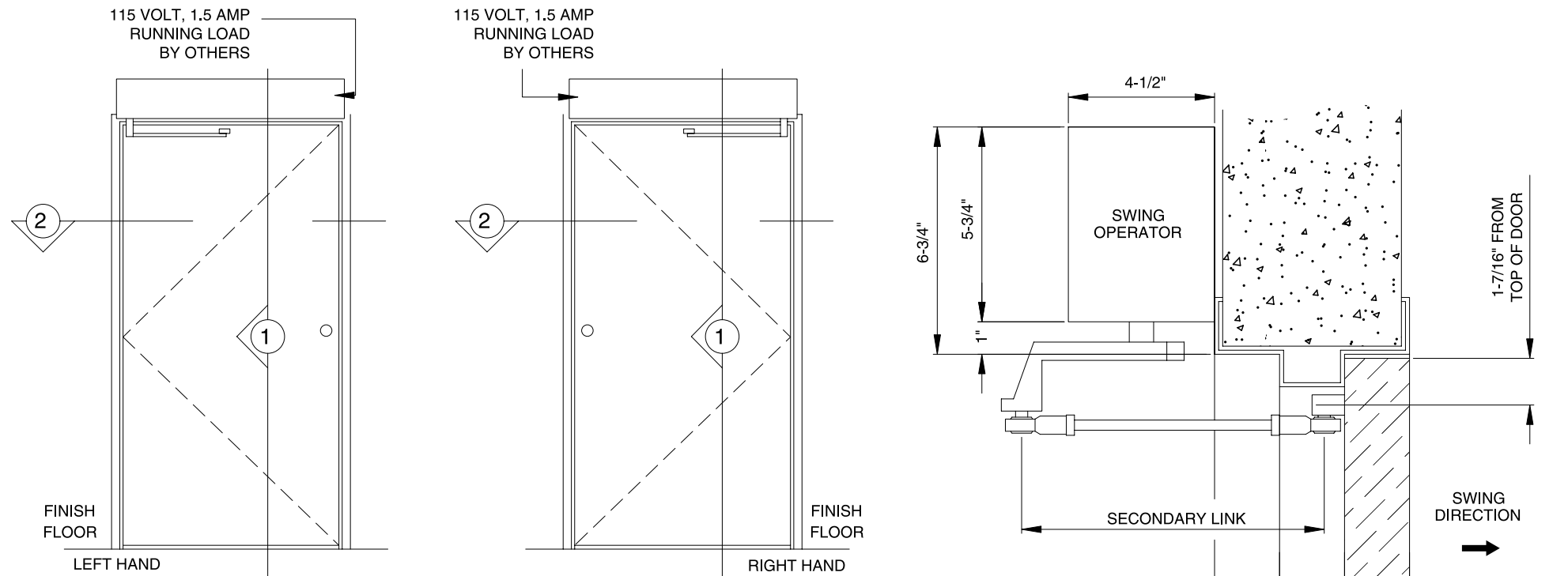
SENIOR-SWING

SINGLE DOOR
SURFACE APPLIED OPERATOR
FOR OFFSET OR BUTT-HUNG DOORS
OUTGOING SWING
WITH PUSH ARM

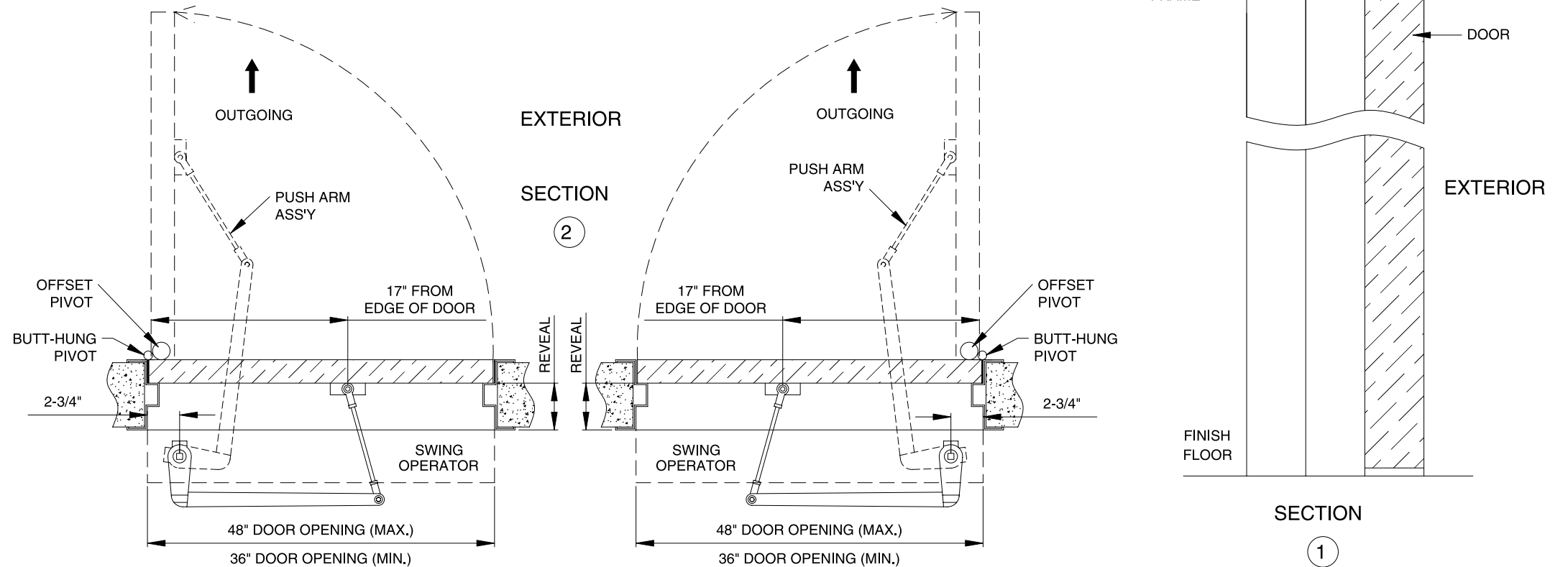
89576REV0
OCT. 31, 2001

7350 West Wilson Ave.
Harwood Heights, IL. 60706-4786

Phone: (800) 543-4635 WWW.DOROMATIC.COM
Fax: (708) 867-0291



ELEVATION



NOTE:

STANDARD PACKAGE:
ELECTRO-MECHANICAL SWING DOOR OPERATOR WITH
MICROPROCESSOR CONTROL BOX AND TOP PUSH ARM.

STANDARD FINISH:
CLEAR ANODIZED - US28
DARK BRONZE ANODIZED - DC13
SPECIAL COLORS AND CLADDING ARE AVAILABLE

* CONSULT ANSI CODES FOR SAFETY REQUIREMENTS.

* ALL WRITTEN DIMENSIONS ARE TO TAKE PREFERENCE OVER SCALED DIMENSIONS.

* OPTIONAL EQUIPMENT:

- HEADER MOUNTED SAFETY SYSTEM
- SAFETY SENSORS
- GUIDE RAILS W/ SAFETY LOGIC BEAM.
- " THE LENGTH WILL BE IN ACCORDANCE WITH ANSI-STANDARD "

* ALL ANSI DECALS ARE PROVIDED.