

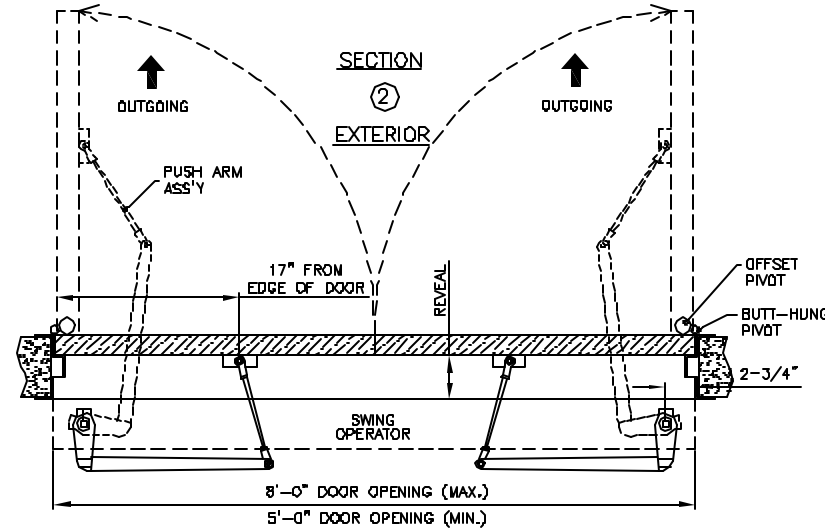
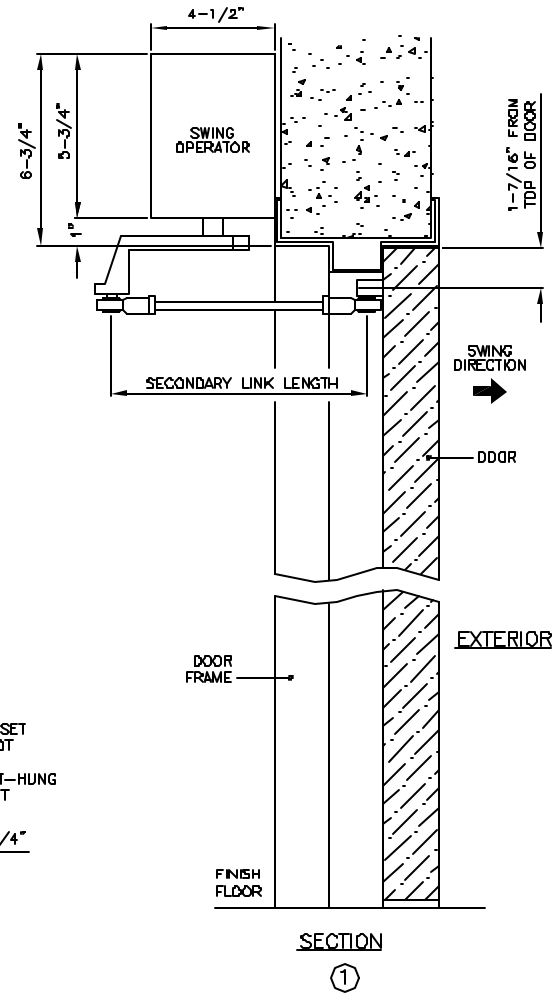
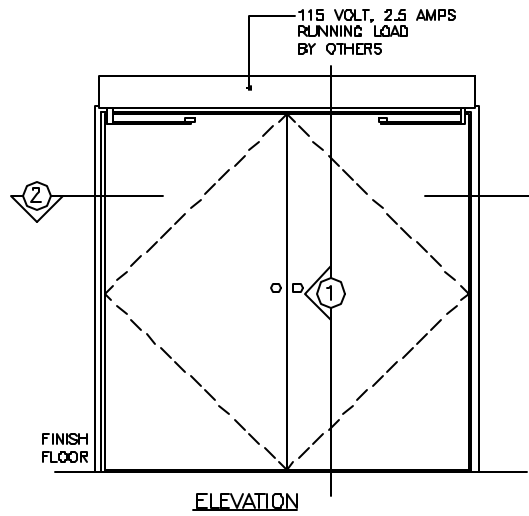


**MID-SWING**  
 SIMULTANEOUS PAIR  
 SURFACE APPLIED OPERATOR  
 FOR OFFSET OR BUTT-HUNG DOORS  
 OUTGOING SWING  
 WITH PUSH ARM

89704REV0  
 NOV. 28, 2002

7350 West Wilson Ave.  
 Harwood Heights, IL. 60706-4786

Phone: (800) 543-4635    www.doromatic.com  
 Fax: (708) 867-0291



**NOTE:**

STANDARD PACKAGE:  
 ELECTRO-MECHANICAL SWING DOOR OPERATOR WITH  
 MICROPROCESSOR CONTROL BOX AND TOP PUSH ARM.

STANDARD FINISH:  
 CLEAR ANODIZED - US28  
 DARK BRONZE ANODIZED - DC13  
 SPECIAL COLORS AND CLADDING ARE AVAILABLE

- \* CONSULT ANSI CODES FOR SAFETY REQUIREMENTS
- \* ALL WRITTEN DIMENSIONS ARE TO TAKE PREFERENCE OVER SCALED DIMENSIONS.
- \* OPTIONAL EQUIPMENT;
  - HEADER MOUNTED SAFETY SYSTEM
  - SAFETY SENSORS
  - GUIDE RAILS W/ SAFETY LOGIC BEAM.  
 \* THE LENGTH WILL BE IN ACCORDANCE WITH ANSI-STANDARD \*
- \* ALL ANSI DECALS ARE PROVIDED.