



ASTRO-FOLD
 BI-FOLDING PAIR - TYPE #1
 OVERHEAD CONCEALED
 CENTER-PIVOTED
 STANDARD BREAKOUT
 WITH THRESHOLD

FS-FX-FX-FS

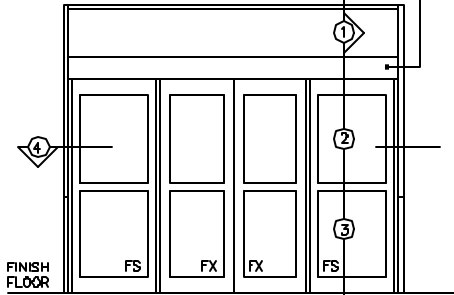
7350 West Wilson Ave.
 Harwood Heights, IL. 60706-4786

Phone: (800) 543-4635
 Fax: (708) 867-0291

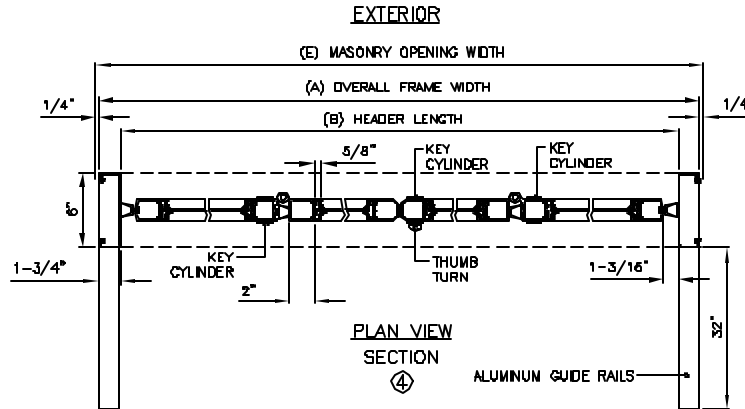
www.doromatic.com

8954DREV
 DEC. 17, 2002
 EGN: 00955

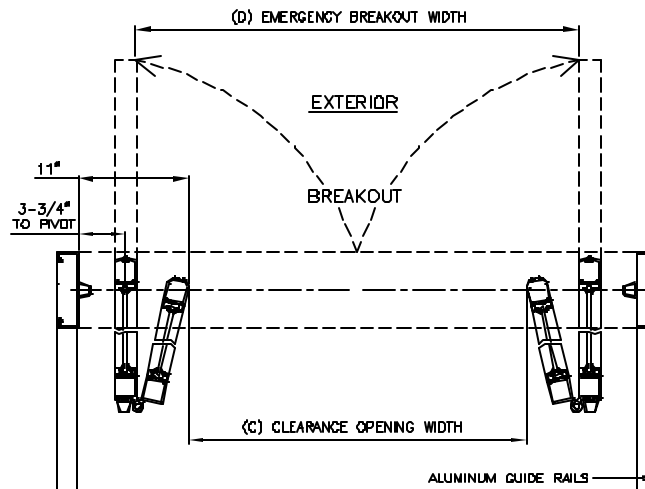
115 VOLT, 2.5 AMP
 RUNNING LOAD
 BY OTHERS



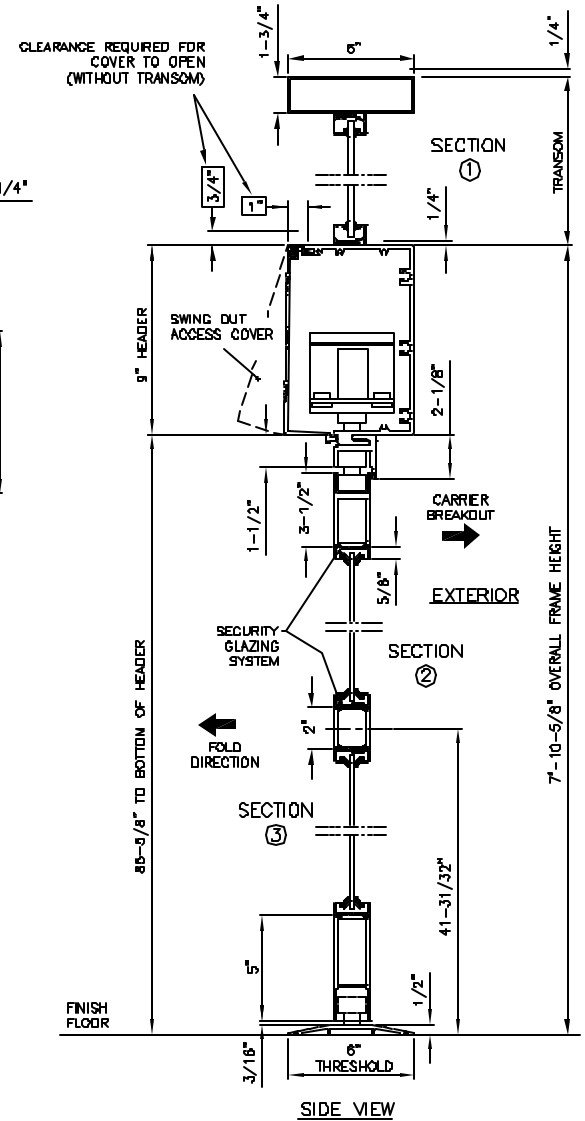
EXTERIOR ELEVATION



PLAN VIEW SECTION



BREAKOUT VIEW



SIDE VIEW

NOTE:

STANDARD PACKAGE:
 OPERATOR, NARROW STILE DOORS, FRAMES, WEATHERSTRIPPING
 2" MUNTINS, EMERGENCY BREAKOUT ON "FS" AND "FX" DOORS,
 MICROPROCESSOR CONTROL BOX WITH POWER BOOST CLOSE,
 CONTINUOUS EXTRUDED HINGE, ALUMINUM GUIDE RAILS, 4-
 POSITION KEYSWITCH, MOTION SENSOR, PRESENCE SENSOR,
 1/4" GLAZING SYSTEM, AND ONE PIECE 1/2" X 6" THRESHOLD
 JAMB TO JAMB.

STANDARD FINISH:
 CLEAR ANODIZED - US2B
 DARK BRONZE ANODIZED - DC13
 SPECIAL COLORS AND CLADDING ARE AVAILABLE

* MAX. GLASS THICKNESS IS 1" ON "FS" AND "FX" DOORS.
 (GLASS STOP HEIGHT = 1-1/8").

* TRANSOM OPTIONAL. MAX. HEIGHT 6"-0" TOP
 OF HEADER TO TOP OF TRANSOM. CONSULT
 FACTORY FOR LARGER SIZES.

* ALL WRITTEN DIMENSIONS ARE TO TAKE PREFERENCE OVER
 SCALED DIMENSIONS.

* SIZES NOT LISTED BELOW - CONSULT FACTORY

* ALL ANSI DECALS ARE PROVIDED.

	DESCRIPTION	MIN.	MAX.
(A)	OVERALL FRAME WIDTH	63-1/2"	111-1/2"
(B)	HEADER LENGTH	60"	108"
(C)	CLEARANCE OPENING WIDTH	38"	46"
(D)	EMERGENCY BREAKOUT WIDTH	50-3/4"	98-3/4"
(E)	MASONRY OPENING WIDTH	64"	112"