



ASTRO-FOLD

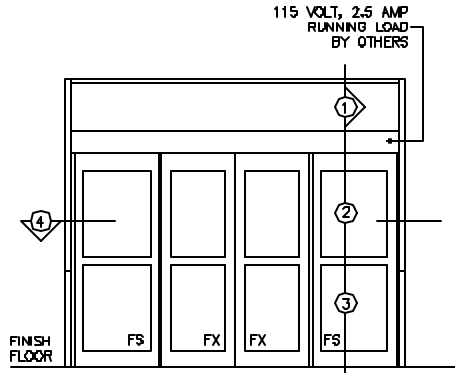
BI-FOLDING PAIR - TYPE #4
 OVERHEAD CONCEALED
 REVERSE FOLD VESTIBULE BREAKOUT
 CENTER-PIVOTED
 WITH THRESHOLD

FS-FX-FX-FS

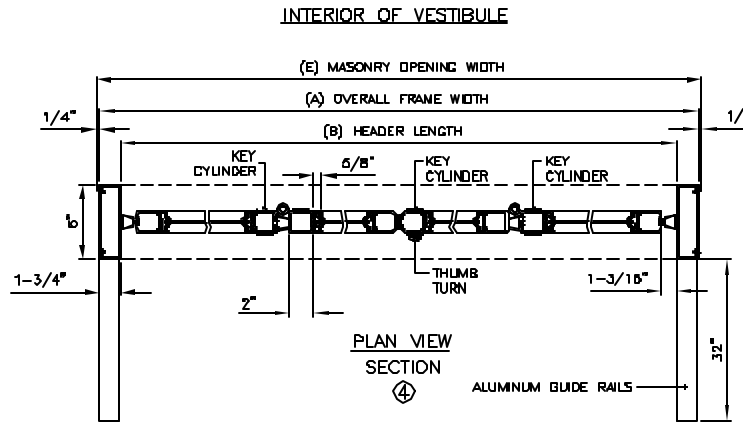
7350 West Wilson Ave.
 Harwood Heights, IL. 60706-4786

Phone: (800) 543-4635
 Fax: (708) 867-0291
 www.doromatic.com

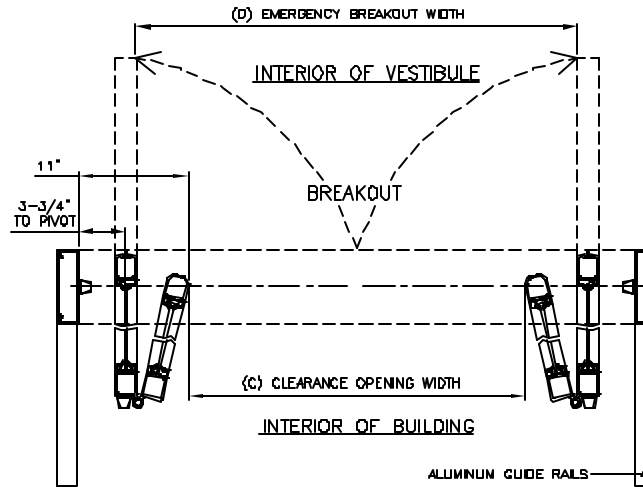
89543REV D
 DEC. 17, 2002
 EGN: 00955



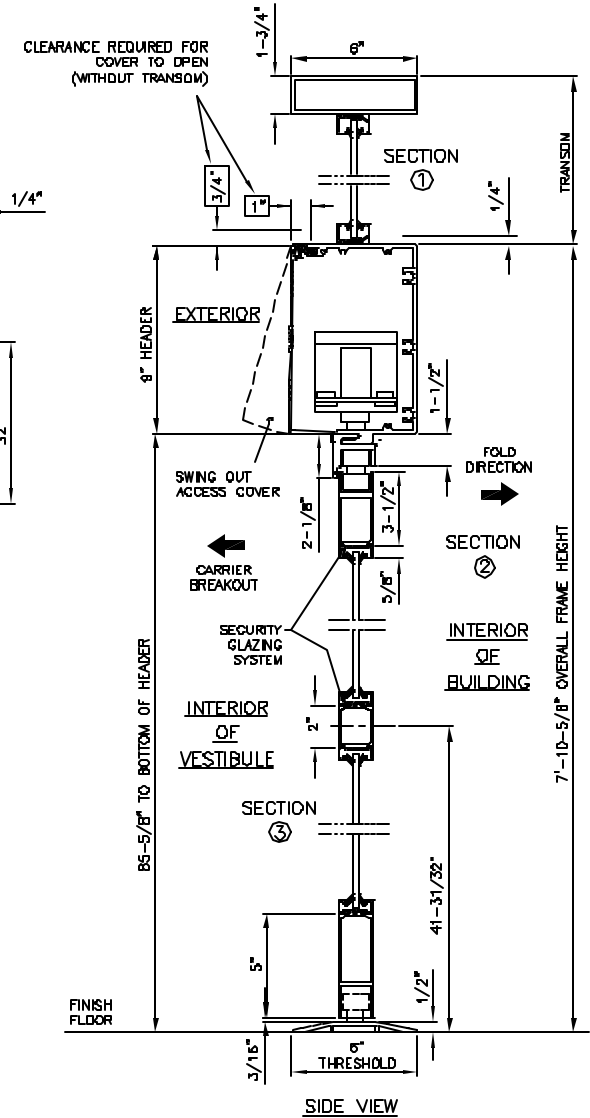
ELEVATION
 INTERIOR OF BUILDING



PLAN VIEW
 SECTION ④



BREAKOUT VIEW



SIDE VIEW

NOTE:

STANDARD PACKAGE:
 OPERATOR, NARROW STILE DOORS, FRAMES, WEATHERSTRIPPING,
 2" MUNTINS, EMERGENCY BREAKOUT ON "FS" AND "FX" DOORS,
 MICROPROCESSOR CONTROL BOX WITH POWER BOOST CLOSE,
 CONTINUOUS EXTRUDED HINGE, ALUMINUM GUIDE RAILS, 4-
 POSITION KEYSWITCH, MOTION SENSOR, PRESENCE SENSOR,
 1/4" GLAZING SYSTEM, AND ONE PIECE 1/2" X 6" THRESHOLD
 JAMB TO JAMB.

STANDARD FINISH:
 CLEAR ANODIZED - US28
 DARK BRONZE ANODIZED - DC13
 SPECIAL COLORS AND CLADDING ARE AVAILABLE

* MAX. GLASS THICKNESS IS 1" ON "FS" AND "FX" DOORS.
 (GLASS STOP HEIGHT = 1-1/8")

* TRANSOM OPTIONAL. MAX. HEIGHT 6'-0" TOP
 OF HEADER TO TOP OF TRANSOM. CONSULT
 FACTORY FOR LARGER SIZES.

* ALL WRITTEN DIMENSIONS ARE TO TAKE PREFERENCE OVER
 SCALED DIMENSIONS.

* SIZES NOT LISTED BELOW - CONSULT FACTORY

* ALL ANSI DECALS ARE PROVIDED.

DESCRIPTION	MIN.	MAX.
(A) OVERALL FRAME WIDTH	63-1/2"	111-1/2"
(B) HEADER LENGTH	60"	108"
(C) CLEARANCE OPENING WIDTH	38"	86"
(D) EMERGENCY BREAKOUT WIDTH	50-3/4"	98-3/4"
(E) MASONRY OPENING WIDTH	64"	112"