



ASTRO-FOLD
 BI-FOLDING PAIR - TYPE #1
 OVERHEAD CONCEALED
 CENTER-PIVOTED
 STANDARD BREAKOUT
 WITHOUT THRESHOLD

FS-FX-FX-FS

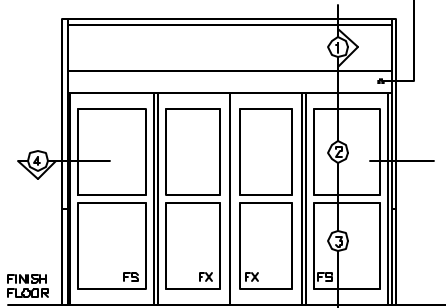
7350 West Wilson Ave.
 Harwood Heights, IL. 60706-4786

Phone: (800) 543-4635
 Fax: (708) 867-0291

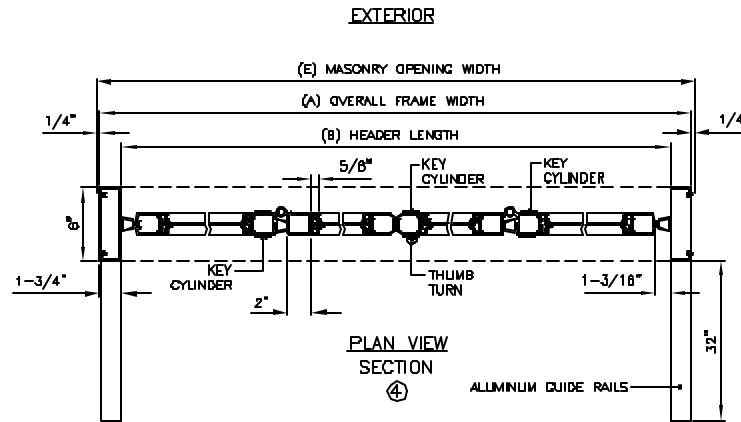
www.doromatic.com

8B544REV D
 DEC. 17, 2002
 EGN: 00855

115 VOLT, 2.5 AMP
 RUNNING LOAD
 BY OTHERS



EXTERIOR ELEVATION



PLAN VIEW SECTION

NOTE:

STANDARD PACKAGE:
 OPERATOR, NARROW STILE DOORS, FRAMES, WEATHERSTRIPPING
 2" MUNTINS, EMERGENCY BREAKOUT ON "FS" AND "FX" DOORS,
 MICROPROCESSOR CONTROL BOX WITH POWER BOOST CLOSE,
 CONTINUOUS EXTRUDED HINGE, ALUMINUM GUIDE RAILS, 4-
 POSITION KEYSWITCH, MOTION SENSOR, PRESENCE SENSOR,
 AND 1/4" GLAZING SYSTEM.

STANDARD FINISH:
 CLEAR ANODIZED - US28
 DARK BRONZE ANODIZED - DC13
 SPECIAL COLORS AND GLAZING ARE AVAILABLE

* MAX. GLASS THICKNESS IS 1" ON "FS" AND "FX" DOORS.
 (GLASS STOP HEIGHT = 1-1/8")

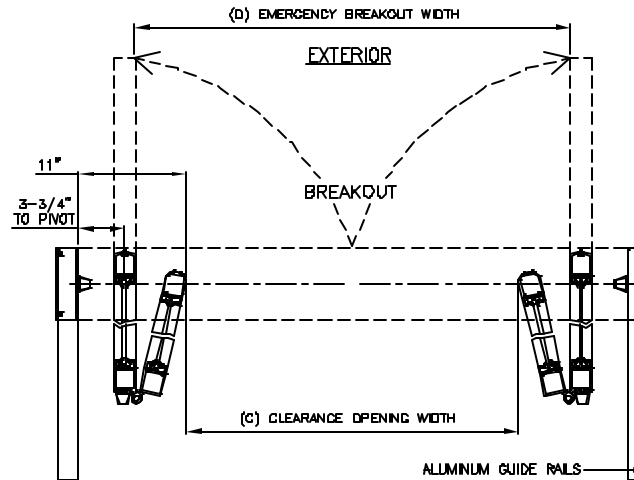
* TRANSOM OPTIONAL. MAX. HEIGHT 6"-6" TOP
 OF HEADER TO TOP OF TRANSOM. CONSULT
 FACTORY FOR LARGER SIZES.

* ALL WRITTEN DIMENSIONS ARE TO TAKE PREFERENCE OVER
 SCALED DIMENSIONS.

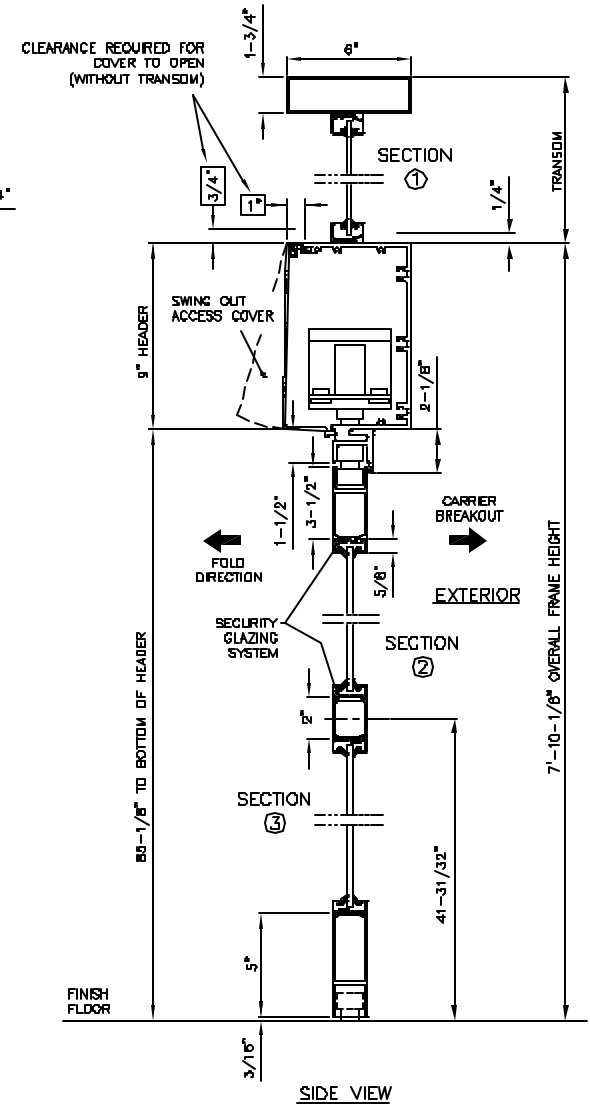
* SIZES NOT LISTED BELOW - CONSULT FACTORY

* ALL ANSI DECALS ARE PROVIDED.

| DESCRIPTION | MIN. | MAX. |
|------------------------------|---------|----------|
| (A) OVERALL FRAME WIDTH | 83-1/2" | 111-1/2" |
| (B) HEADER LENGTH | 60" | 108" |
| (C) CLEARANCE OPENING WIDTH | 38" | 86" |
| (D) EMERGENCY BREAKOUT WIDTH | 80-3/4" | 98-3/4" |
| (E) MASONRY OPENING WIDTH | 64" | 112" |



BREAKOUT VIEW



SIDE VIEW