



### ASTRO-FOLD

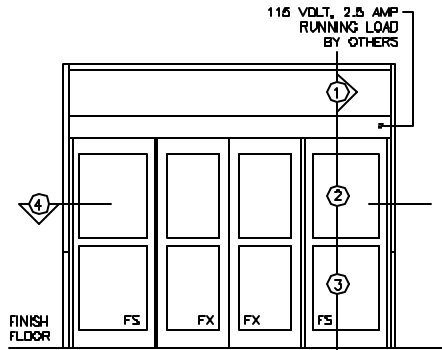
BI-FOLDING PAIR - TYPE #5  
 OVERHEAD CONCEALED  
 STANDARD BREAKOUT WITH MAGNETIC LOCK  
 CENTER-PIVOTED  
 WITHOUT THRESHOLD

FS-FX-FX-FS

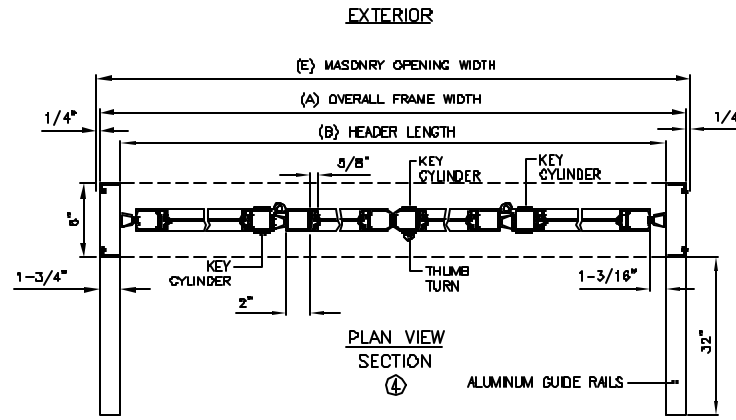
7350 West Wilson Ave.  
 Harwood Heights, IL. 60706-4786

Phone: (800) 543-4635  
 Fax: (708) 867-0291  
 www.doromatic.com

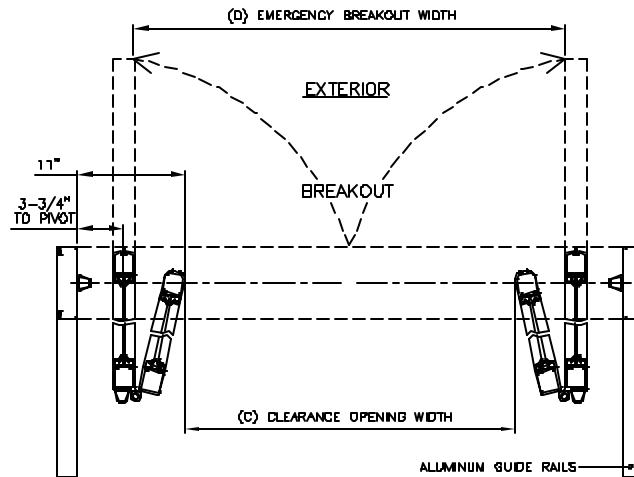
8D548REV D  
 DEC. 17, 2002  
 EGN: 00855



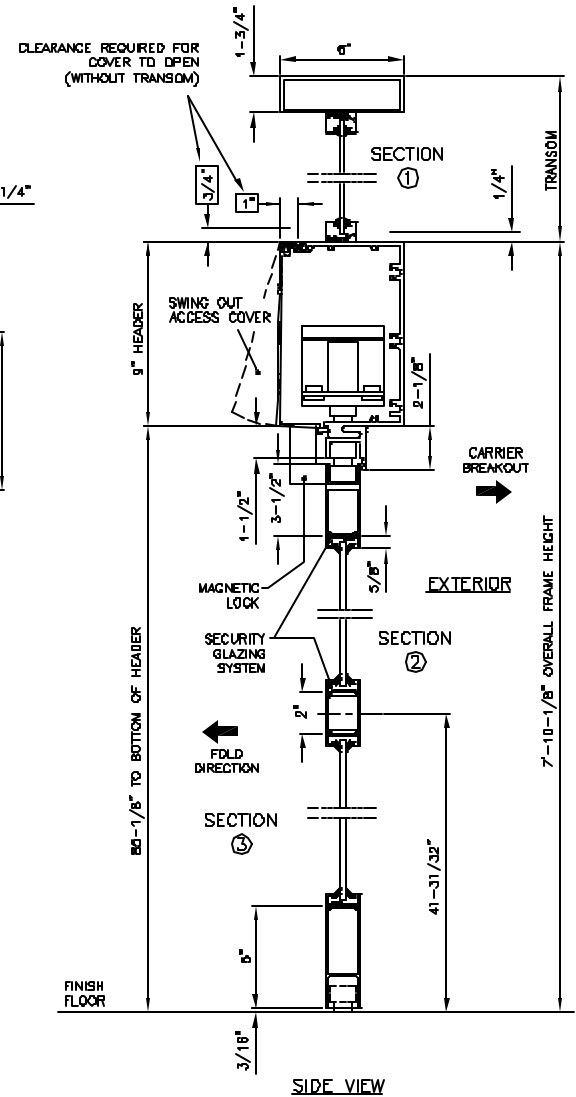
EXTERIOR ELEVATION



PLAN VIEW SECTION



BREAKOUT VIEW



SIDE VIEW

**NOTE:**

STANDARD PACKAGE:  
 OPERATOR, NARROW STILE DOORS, FRAMES, WEATHERSTRIPPING  
 2" MUNTINS, EMERGENCY BREAKOUT ON "FS" AND "FX" DOORS,  
 MICROPROCESSOR CONTROL BOX WITH POWER BIDIST CLOSE,  
 CONTINUOUS EXTRUDED HINGE, ALUMINUM GUIDE RAILS, 4-  
 POSITION KEYSWITCH, MOTION SENSOR, PRESENCE SENSOR,  
 AND 1/4" GLAZING SYSTEM.

STANDARD FINISH:  
 CLEAR ANODIZED - US26  
 DARK BRONZE ANODIZED - DC13  
 SPECIAL COLORS AND CLADDING ARE AVAILABLE

\* MAX. GLASS THICKNESS IS 1" ON "FS" AND "FX" DOORS.  
 (GLASS STOP HEIGHT = 1-1/8")

\* TRANSOM OPTIONAL MAX. HEIGHT 6"-0" TOP  
 OF HEADER TO TOP OF TRANSOM. CONSULT  
 FACTORY FOR LARGER SIZES.

\* ALL WRITTEN DIMENSIONS ARE TO TAKE PREFERENCE OVER  
 SCALED DIMENSIONS.

\* SIZES NOT LISTED BELOW - CONSULT FACTORY

\* ALL ANSI DECALS ARE PROVIDED.

	DESCRIPTION	MIN.	MAX.
(A)	OVERALL FRAME WIDTH	63-1/2"	111-1/2"
(B)	HEADER LENGTH	60"	106"
(C)	CLEARANCE OPENING WIDTH	38"	86"
(D)	EMERGENCY BREAKOUT WIDTH	50-3/4"	98-3/4"
(E)	MASONRY OPENING WIDTH	64"	112"