

NOTE:

STANDARD PACKAGE: STILE DOORS, FRAMES, WEATHERSTRIPPING OPERATOR, NARROW GLAZING BREAKOUT ON "FS" AND "FX" DOORS, MICROPROCESSOR CONTROL BOX WITH POWER BOOST CLOSE, CONTINUOUS EXTRUDED HINGE, ALUMINUM GUIDE RAILS, 4-POSITION KEYSWITCH, MOTION SENSOR, PRESENCE SENSOR, AND 1/4" GLAZING SYSTEM.

STANDARD FINISH:
CLEAR ANODIZED - US28
DARK BRONZE ANODIZED - DC13
SPECIAL COLORS AND CLADDING ARE AVAILABLE

* MAX. GLASS THICKNESS IS 1" ON "FS" AND "FX" DOORS.
(GLASS STOP HEIGHT = 1-1/8").

* TRANSOM OPTIONAL. MAX. HEIGHT 6'-0" TOP OF HEADER TO TOP OF TRANSOM. CONSULT FACTORY FOR LARGER SIZES.

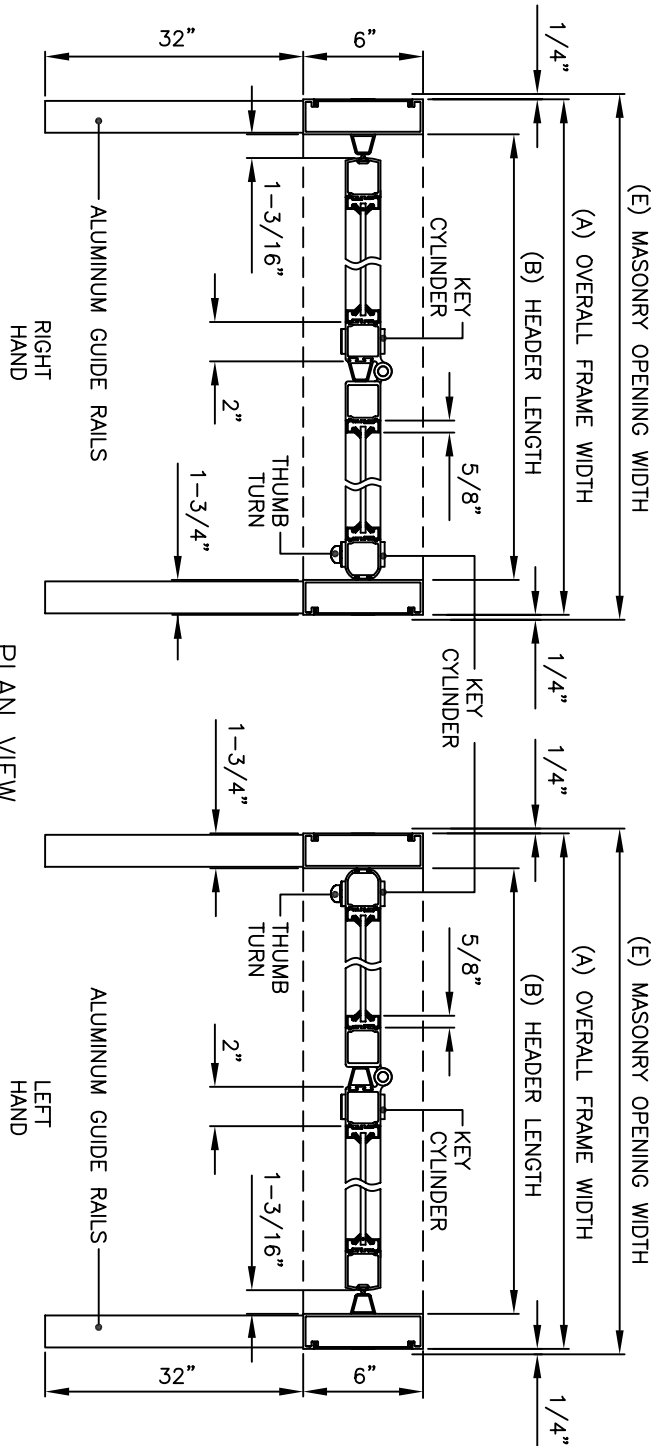
* ALL WRITTEN DIMENSIONS ARE TO TAKE PREFERENCE OVER SCALED DIMENSIONS.

* SIZES NOT LISTED BELOW - CONSULT FACTORY

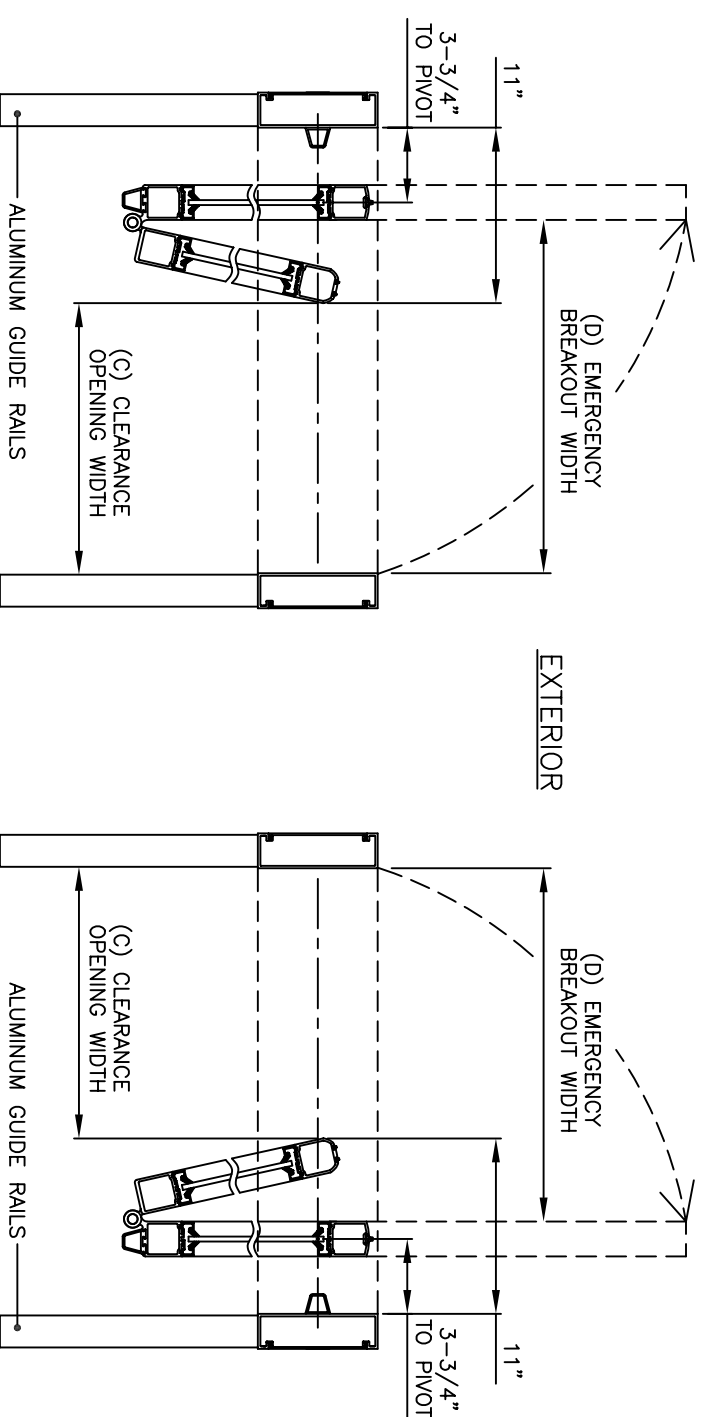
* ALL ANSI DECALS ARE PROVIDED.

DESCRIPTION	DIMENSIONS	
	MIN.	MAX.

(A) OVERALL FRAME WIDTH	47-1/2"	57-1/2"
(B) HEADER LENGTH	44"	54"
(C) CLEARANCE OPENING WIDTH	33"	43"
(D) EMERGENCY BREAKOUT WIDTH	39-3/8"	49-3/8"
(E) MASONRY OPENING WIDTH	48"	58"

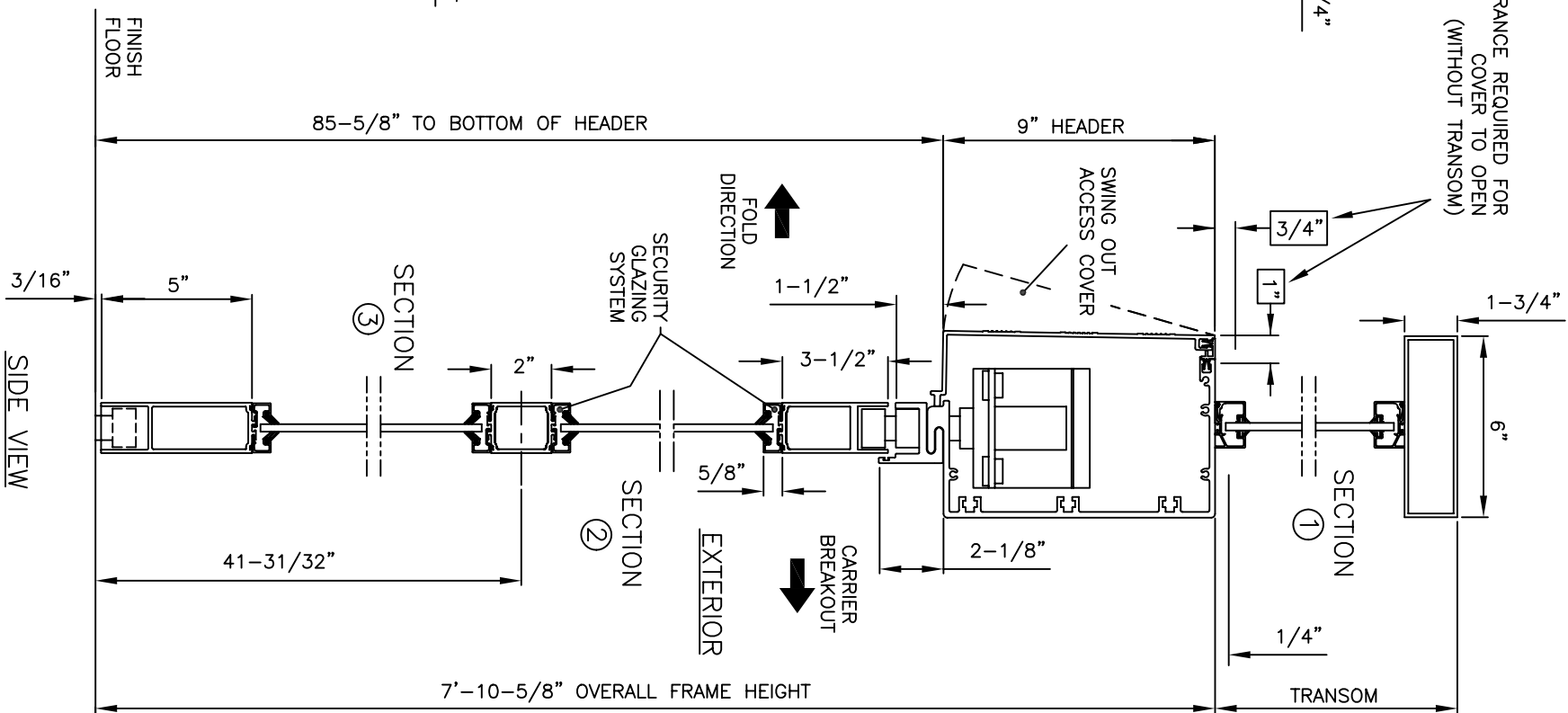


PLAN VIEW
SECTION ④



BREAKOUT VIEW

CLEARANCE REQUIRED FOR COVER TO OPEN (WITHOUT TRANSOM)



SIDE VIEW