



SLIMLINE-ICU

SINGLE SLIDING DOOR  
FULL BREAKOUT  
NARROW STYLE  
TRACKLESS CLEAR OPENING

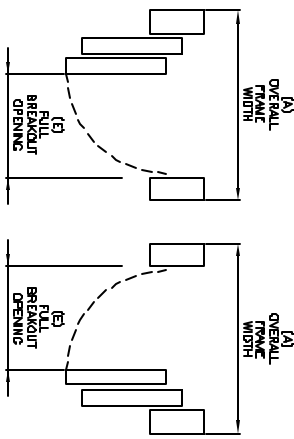
SO-SX AND SX-SO

7350 West Wilson Ave.  
Homewood Heights, IL, 60706-4786

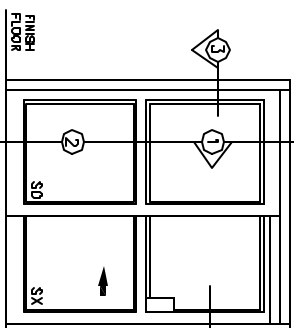
Phone: (800) 543-4635  
Fax: (708) 867-0291

www.doromatic.com

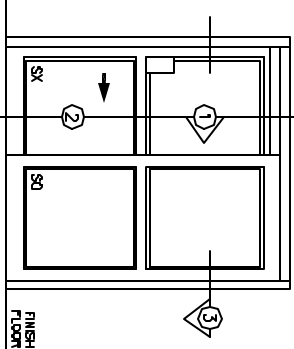
89558REV/B  
DCT. 2. 2002



BREAKOUT DETAIL



(LEFT HAND)



(RIGHT HAND)

FRONT ELEVATION

**NOTE:**

STANDARD PACKAGE:  
DRILL DETENTS ON SX DOORS, FLUSH BOLTS ON SO PANELS,  
HEADER 2-3/4" x 4-1/2", FRAMES, NARROW STYLE SLIDING DOOR  
AND SIDING, 2 WINDOWS, 5" BOTTOM RAIL, RECESSED DOOR  
PULL ON EXTERIOR AND INTERIOR, AND 1/4" SLIDING STOP.

STANDARD FINISH:  
CLEAR ANODIZED - US2A  
DARK BRONZE ANODIZED - DC13  
SPECIAL COLORS ARE AVAILABLE

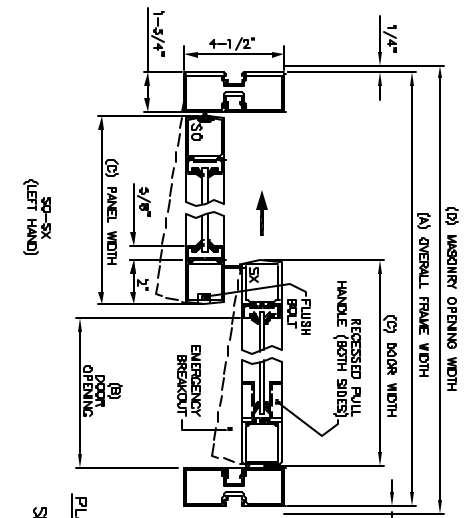
\* FULL BREAKOUT POSITION WILL ONLY OCCUR  
IN FULL OPEN POSITION.

\* MAX. GLASS THICKNESS IS 1/4".

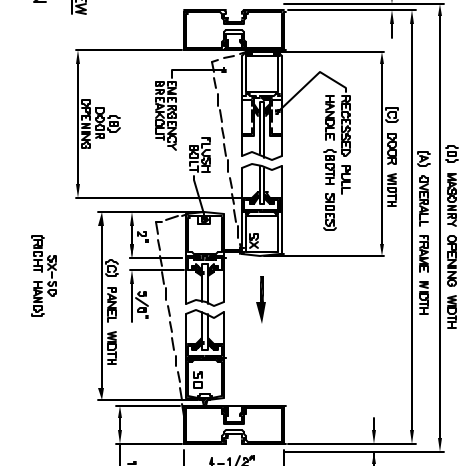
\* ALL INTERNAL DIMENSIONS ARE TO TAKE  
PREFERENCE OVER SCALED DIMENSIONS.

\* SPECIAL SIZES - CONSULT WITH FACTORY.

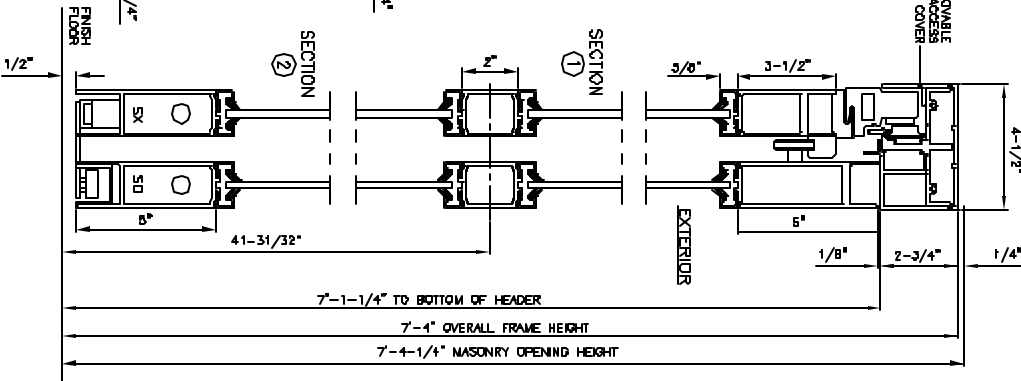
OVERALL FRAME WIDTH ( A )	DOOR OPENING WIDTH ( B )	DOOR WIDTH ( C )	MASONRY OPENING ( D )	FULL BREAKOUT OPENING ( E )
7'-0"	30-3/8"	41-1/8"	7'-0 1/2"	74-1/2"
8'-0"	44-3/8"	47-1/8"	8'-0 1/2"	86-1/2"
8'-0"	30-3/8"	33-1/8"	8'-0 1/2"	86-1/2"



PLAN VIEW  
SECTION ③ (LEFT HAND)



PLAN VIEW  
SECTION ③ (RIGHT HAND)



REMOVABLE WEATHER COVER  
EXTERIOR  
INTERIOR  
FINISH FLOOR  
4-1/2"  
3-1/2"  
2-3/4"  
1/4"  
7'-1/4" TO BOTTOM OF HEADER  
7'-4" OVERALL FRAME HEIGHT  
7'-4-1/4" MASONRY OPENING HEIGHT