



SLIMLINE-ICU
 SINGLE SLIDING DOOR - RIGHT HAND
 3-LEAF FULL BREAKOUT
 NARROW STILE
 TRACKLESS CLEAR OPENING

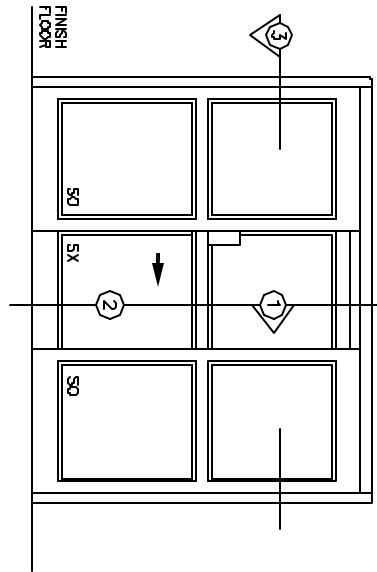
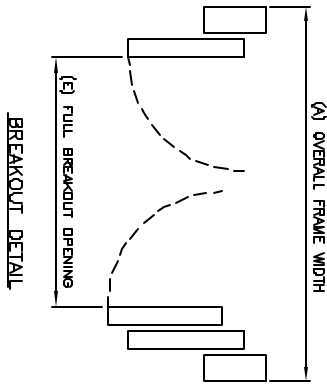
SO-SX-SO

7350 West Wilson Ave.
 Homewood Heights, IL, 60706-4786

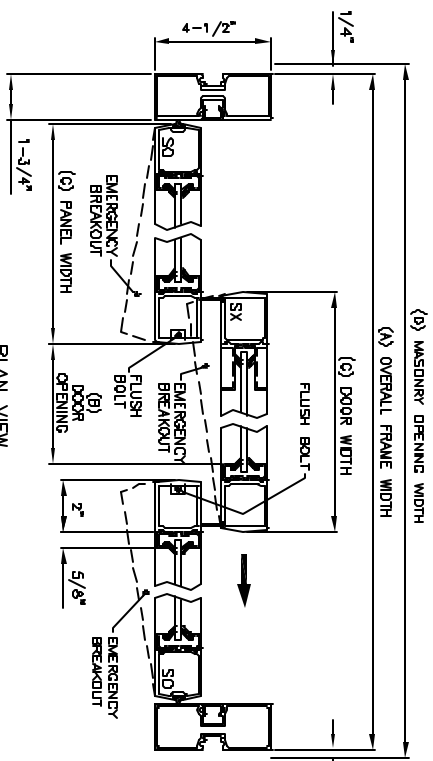
Phone: (800) 543-4635
 Fax: (708) 867-0291

www.doromatic.com

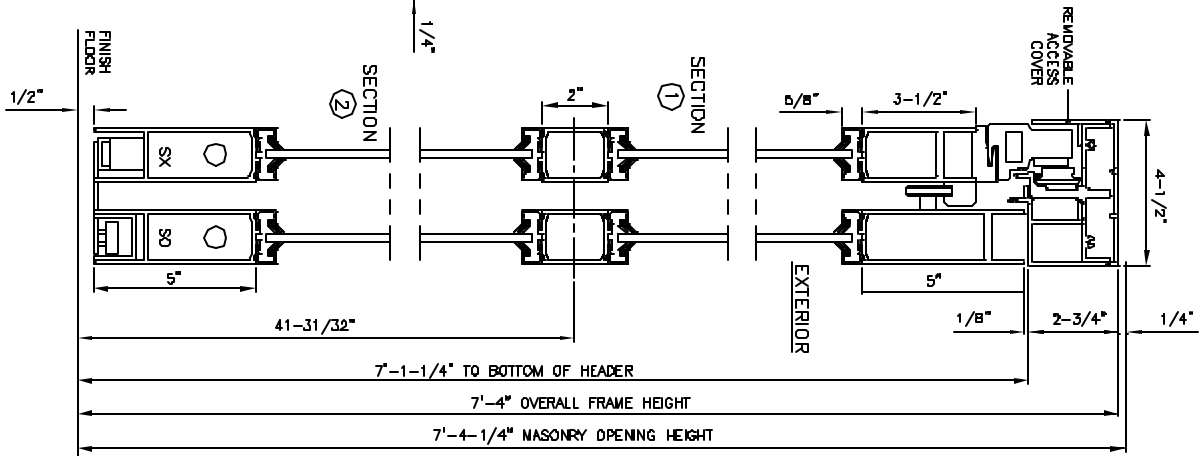
89560REV/B
 OCT. 2, 2002



FRONT ELEVATION



PLAN VIEW SECTION 3



NOTE:

STANDARD PACKAGE:
 BALL DETENTS ON SX DOORS, FLUSH BOLTS ON SO PANELS,
 HEADER 2-3/4" X 4-1/2" FRAMES, NARROW STILE SLIDING DOOR
 AND SIDELITES, 2" MUNTINS, 5" BOTTOM RAILS, RECESSED DOOR
 PULL ON EXTERIOR AND INTERIOR AND 1/4" GLAZING SYSTEM.

STANDARD FINISH:
 CLEAR ANODIZED - US2B
 DARK BRONZE ANODIZED - DC13
 SPECIAL COLORS ARE AVAILABLE

* FULL BREAKOUT POSITION WILL ONLY OCCUR
 IN FULL OPEN POSITION.

* MAX. GLASS THICKNESS IS 1/4".

* ALL WRITTEN DIMENSIONS ARE TO TAKE
 PREFERENCE OVER SCALED DIMENSIONS.

* SPECIAL SIZES - CONSULT WITH FACTORY.

OVERALL FRAME WIDTH (A)	DOOR OPENING WIDTH (B)	DOOR WIDTH (C)	MASONRY OPENING (D)	FULL BREAKOUT OPENING (E)
[MM] 8' 2-3/16"	32"	36-3/4"	6' 2-11/16"	67-11/16"
[MM] 13' 3-3/16"	48-3/8"	53-1/8"	13' 3-13/16"	146-13/16"