



SLIMLINE-ICU
 SINGLE SLIDING DOOR - LEFT HAND
 3-LEAF FULL BREAKOUT
 NARROW STILE
 TRACKLESS CLEAR OPENING

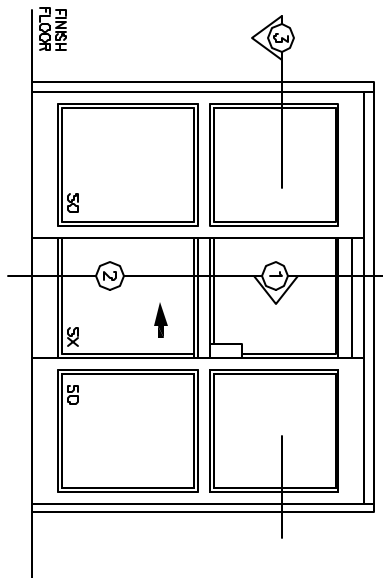
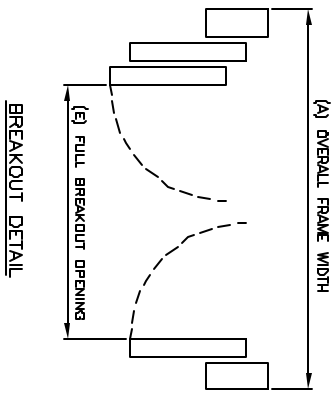
SO-SX-SO

7350 West Wilson Ave.
 Homewood Heights, IL, 60706-4786

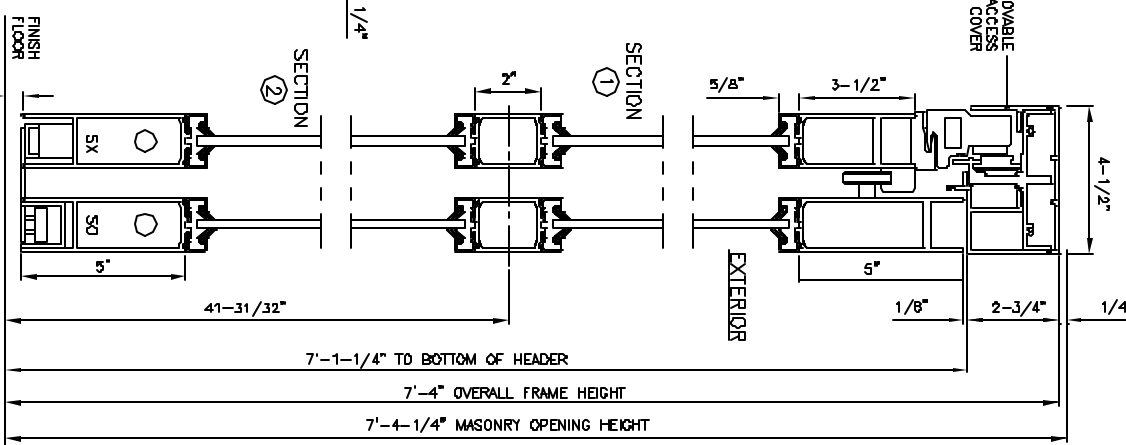
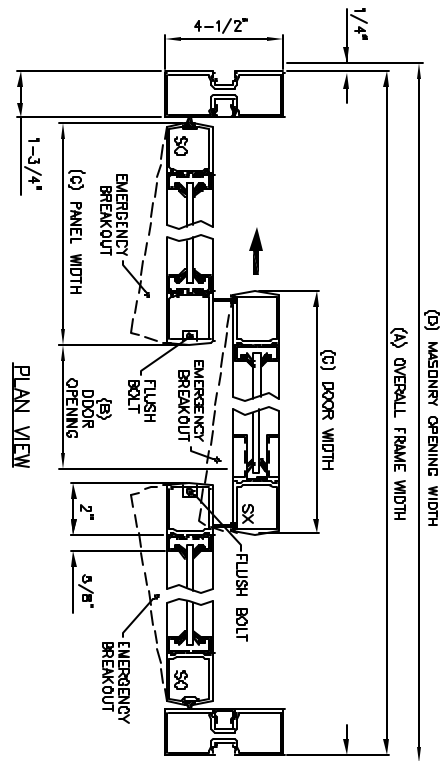
Phone: (800) 543-4635
 Fax: (708) 867-0291

www.doromatic.com

89561 REV B
 OCT. 2, 2002



FRONT ELEVATION



NOTE:

STANDARD PACKAGE:
 BALL BEZELS ON SX DOORS, FLUSH BOLTS ON SO PANELS,
 HEADER 2-3/4" X 4-1/2", FRAMES, NARROW STILE SLIDING DOOR
 AND SIDELITES, 2" MUNTINS, 5" BOTTOM RAILS, RECESSED DOOR
 PULL ON EXTERIOR AND INTERIOR, AND 1/4" GLAZING SYSTEM.

STANDARD FINISH:
 CLEAR ANODIZED - US28
 DARK BRONZE ANODIZED - DC13
 SPECIAL COLORS ARE AVAILABLE

- * FULL BREAKOUT POSITION WILL ONLY OCCUR IN FULL OPEN POSITION.
- * MAX. GLASS THICKNESS IS 1/4".
- * ALL WRITTEN DIMENSIONS ARE TO TAKE PREFERENCE OVER SCALED DIMENSIONS.

* SPECIAL SIZES - CONSULT WITH FACTORY.

OVERALL FRAME WIDTH { A }	DOOR OPENING WIDTH { B }	DOOR WIDTH { C }	MASONRY OPENING { D }	FULL BREAKOUT OPENING { E }
(MIN.) 9'-2-3/16"	32"	36-3/4"	9'-2-11/16"	97-11/16"
(MAX.) 13'-3-5/16"	48-3/8"	53-1/8"	13'-3-13/16"	148-13/16"