



SLIMLINE-ICU
BI-PARTING SLIDING DOORS - TELESCOPIC
WITH RECESSED DOOR HANDLES
FULL BREAKOUT
TRACKLESS DOOR OPENING
(FLOOR TRACK UNDER PANEL)

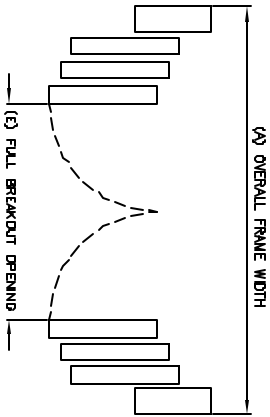
SO-SX-SX-SX-SX-SO

7350 West Wilson Ave.
Homewood Heights, IL, 60706-4786

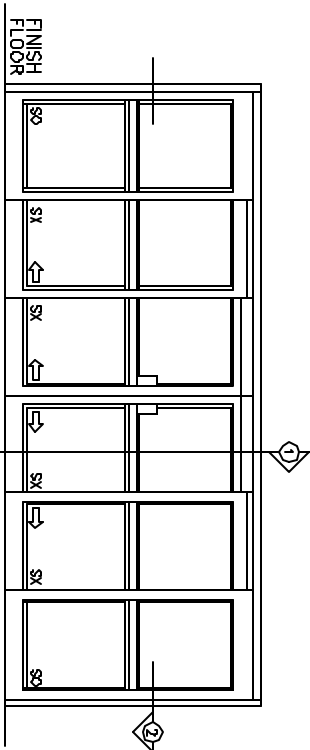
Phone: (800) 543-4635
Fax: (708) 867-0291

www.doromatic.com

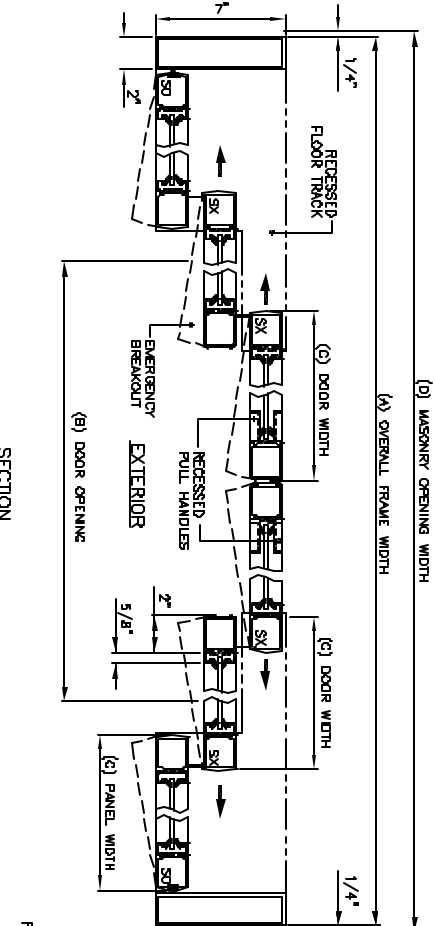
89973REV0
OCT. 2, 2002



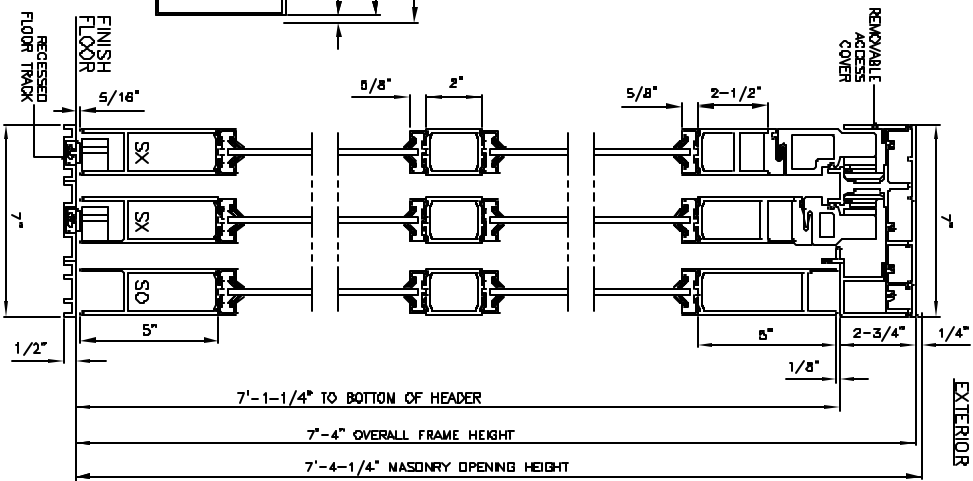
BREAKOUT DETAIL



EXTERIOR ELEVATION



SECTION 2



SECTION 1

NOTE:

STANDARD PACKAGES:
BULL DETENTS ON SX DOORS AND SO PANELS, HEADER 2-3/4" X 7" FRAMES, NARROW STILE SLIDING DOOR AND SIDELITES, 2" MUNTINS, 3" BOTTOM RAILS, RECESSED DOOR PULL HANDLES ON EXTERIOR AND INTERIOR, AND 1/4" GLAZING SYSTEM, AND 1/2" X 7" RECESSED FLOOR TRACK EXTENDING 2/3 ACROSS PACKAGE FROM EACH PANEL END.

STANDARD FINISH:
CLEAR ANODIZED - US28
DARK BRONZE ANODIZED - D013
SPECIAL COLORS ARE AVAILABLE

* FULL BREAKOUT AT ANY POSITION
* MAX. GLASS THICKNESS IS 1/4"

* ALL WRITTEN DIMENSIONS ARE TO TAKE PREFERENCE OVER SEALED DIMENSIONS.

* SPECIAL SIZES - CONSULT WITH FACTORY.

OVERALL FRAME WIDTH (A)	DOOR OPENING WIDTH (B)	DOOR WIDTH (C)	MASONRY OPENING WIDTH (D)	FULL BREAKOUT OPENING (E)
(MIN) 5'-3-1/4"	58"	17-1/8"	5'-3-3/4"	77-1/4"
(MAX) 24'-0"	184-5/4"	48-5/8"	24'-0 1/2"	265"