



SLIMLINE-ICU
 BI-PARTING SLIDING DOORS
 FULL BREAKOUT
 WITH RECESSED DOOR HANDLES
 TRACKLESS DOOR OPENING
 (FLOOR TRACK UNDER PANEL)

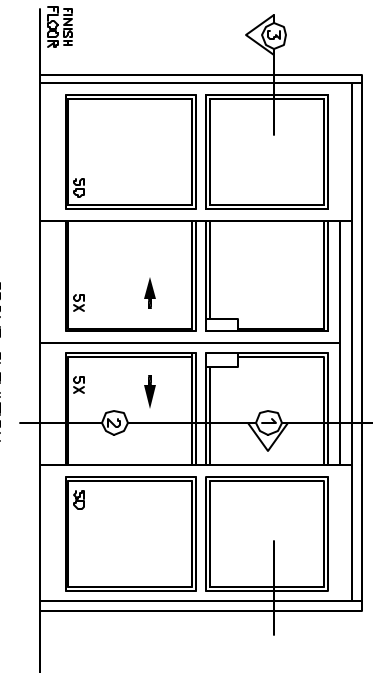
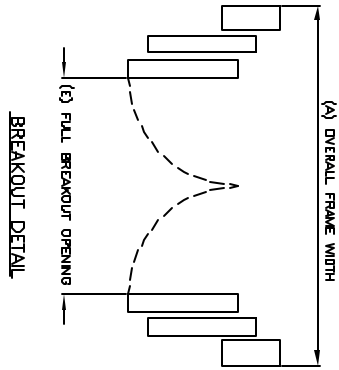
SO-SX-SX-SO

7350 West Wilson Ave.
 Homewood Heights, IL, 60706-4786

Phone: (800) 543-4635
 Fax: (708) 867-0291

www.doromatic.com

8998REV0
 DCT, 2, 2002



FRONT ELEVATION

NOTE:

STANDARD PACKAGE:
 SILL DENTS ON SX, DOORS AND SO PANELS, HEADER 2-3/4"
 X 1-1/2" FINISH, NARROW SILE BUILDING DOOR AND SIRELITES,
 2" MANNING, 3" BOTTOM PALS, RECESSED DOOR PULL ON X
 EXTERIOR AND INTERIOR, 1/4" GLAZING SYSTEM, AND 1/2"
 4-1/2" RECESSED FLOOR TRACK IN PANEL AREA

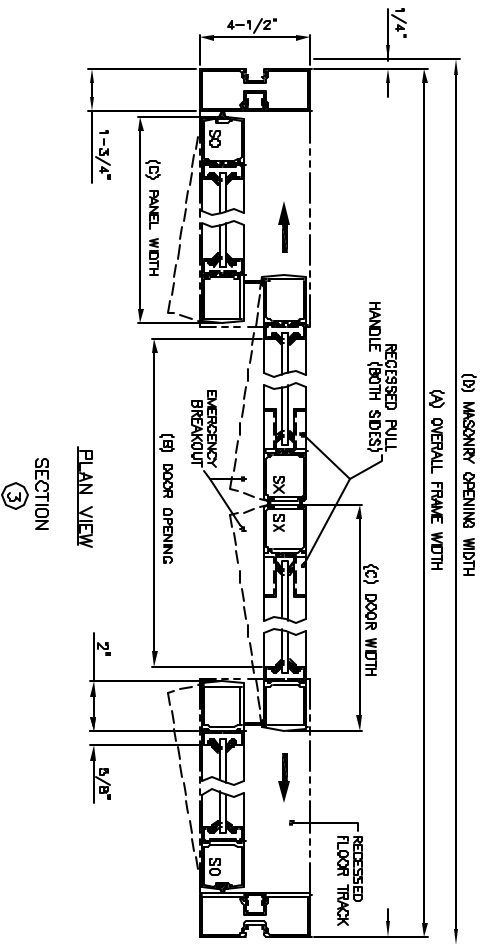
STANDARD FINISH:
 CLEAR ANODIZED - US28
 DARK BRONZE ANODIZED - DC13
 SPECIAL COLORS ARE AVAILABLE

* FULL BREAKOUT AT ANY POSITION,
 * MAX. GLASS THICKNESS IS 1/4",

* ALL WRITTEN DIMENSIONS ARE TO TAKE
 PREFERENCE OVER SCALED DIMENSIONS.

* SPECIAL SIZES - CONSULT WITH FACTORY.

OVERALL FRAME WIDTH (A)	DOOR OPENING WIDTH (B)	DOOR WIDTH (C)	MASONRY OPENING (D)	FULL BREAKOUT OPENING (E)
10'-0"	84'-1/2"	30"	10'-0 1/2"	104'-1/2"
12'-0"	88'-1/2"	36"	12'-0 1/2"	128'-1/2"
14'-0"	78'-1/2"	42"	14'-0 1/2"	152'-1/2"



PLAN VIEW SECTION 3

