



SLIMLINE-ICU
 SINGLE SLIDING DOOR - RIGHT HAND
 3-LEAF FULL BREAKOUT
 NARROW STILE
 TRACKLESS DOOR OPENING
 (FLOORTRACK UNDER PANEL)

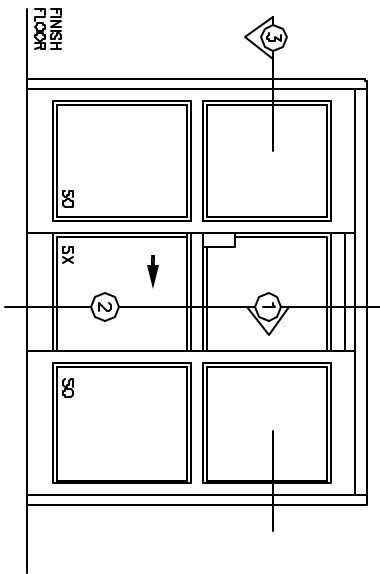
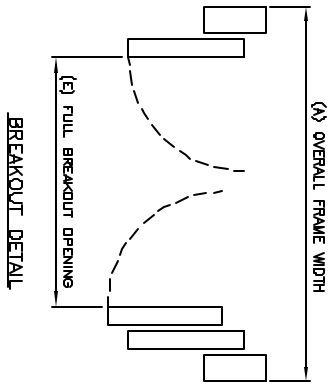
SO-SX-SO

7350 West Wilson Ave.
 Homewood Heights, IL, 60706-4786

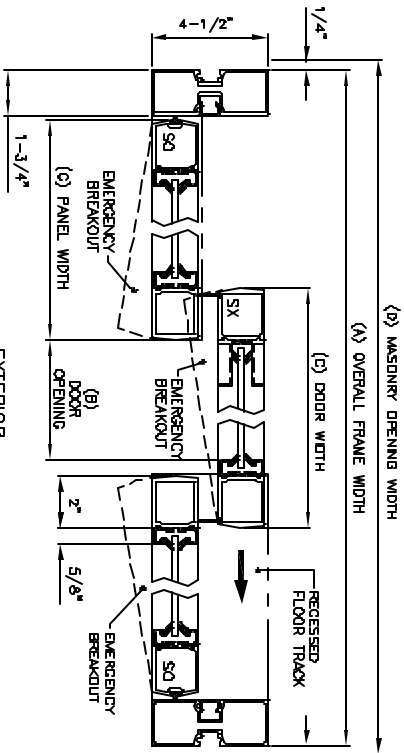
Phone: (800) 543-4635
 Fax: (708) 857-0291

www.doromatic.com

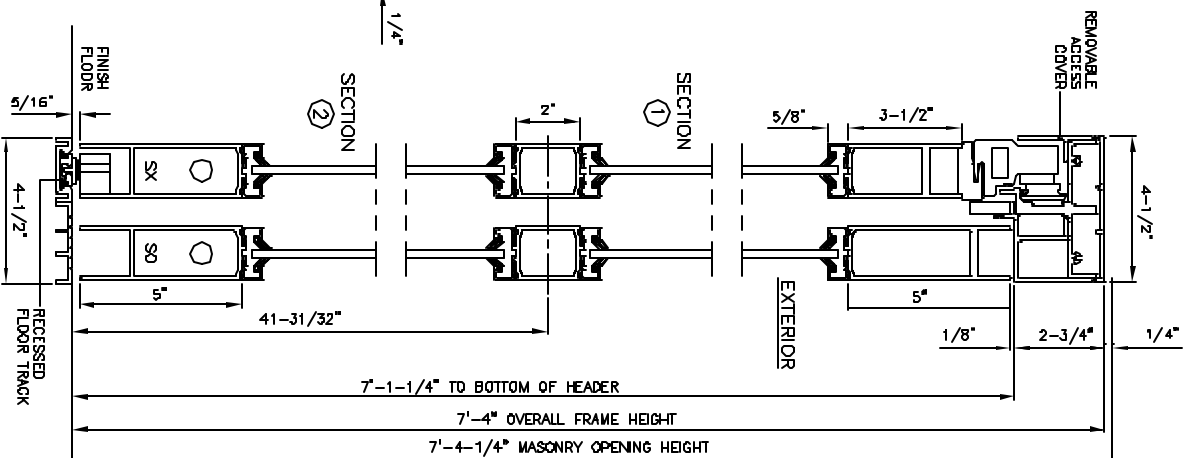
8987REVO
 DCL 2, 2002



FRONT ELEVATION



EXTERIOR SECTION



NOTE:

STANDARD PACKAGE:
 BALL BEARINGS ON SX DOORS AND SO PANELS. HEADER 2-3/4" X 4-1/2". FRAMES, NARROW STILE SLIDING DOOR AND SIDINGLES, 2" MOUNTING, 5" BOTTOM RAILS, RECESSED DOOR FULL ON EXTERIOR AND INTERIOR, 1/4" GLAZING SYSTEM, AND 1/2" X 4-1/2" RECESSED FLOOR TRACK IN PANEL AREA.

STANDARD FINISH:
 CLEAR ANODIZED - US28
 DARK BRONZE ANODIZED - DC13
 SPECIAL COLORS ARE AVAILABLE

* FULL BREAKOUT AT ANY POSITION.

* MAX. GLASS THICKNESS IS 1/4".

* ALL WRITTEN DIMENSIONS ARE TO TAKE PREFERENCE OVER SCALED DIMENSIONS.

* SPECIAL SIZES - CONSULT WITH FACTORY.

OVERALL FRAME WIDTH (A)	DOOR OPENING WIDTH (B)	DOOR WIDTH (C)	MASONRY OPENING (D)	FULL BREAKOUT OPENING (E)
(MIN.) 8'-2-3/16"	32"	36-3/4"	8'-2-11/16"	97'-11/16"
(MAX.) 13'-3-5/16"	48-3/8"	53'-1/8"	13'-3-13/16"	144'-13/16"