



SLIMLINE-ICU
 SINGLE SLIDING DOOR - LEFT HAND
 3-LEAF FULL BREAKOUT
 NARROW STILE
 TRACKLESS DOOR OPENING
 (FLOOR TRACK UNDER PANEL)

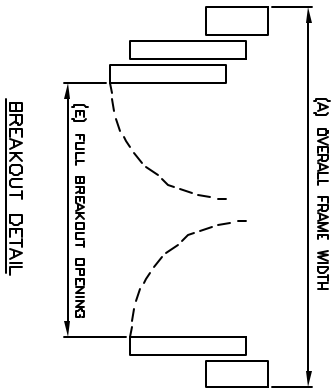
SO-SX-SO

7350 West Wilson Ave.
 Homewood Heights, IL 60706-4786

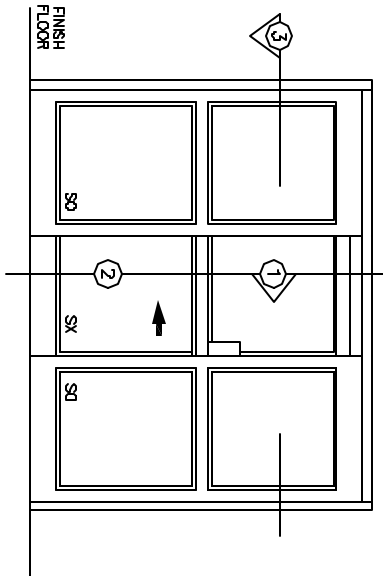
Phone: (800) 543-4635
 Fax: (708) 867-0291

www.doromatic.com

8988REV0
 OCT. 2, 2002



BREAKOUT DETAIL



FRONT ELEVATION

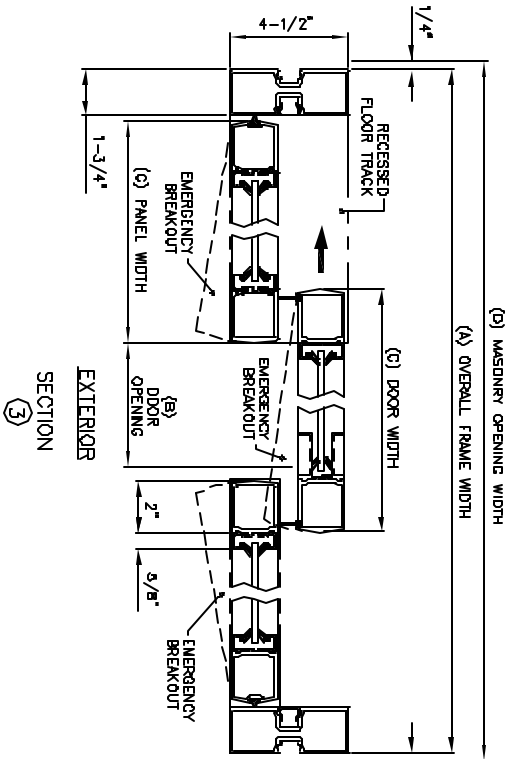
NOTE:

STANDARD PACKAGE:
 BALL DETENTS ON SX DOORS AND SO PANELS, HEADER 2-3/4"
 X 4-1/2" FRAMES, NARROW STILE SLIDING DOOR AND SIDELITES,
 2" MUNTINS, 4" BOTTOM RAILS, RECESSED DOOR PULL ON X
 EXTERIOR AND INTERIOR, 1/4" GLAZING SYSTEM, AND 1/2" X
 4-1/2" RECESSED FLOOR TRACK IN PANEL AREA.

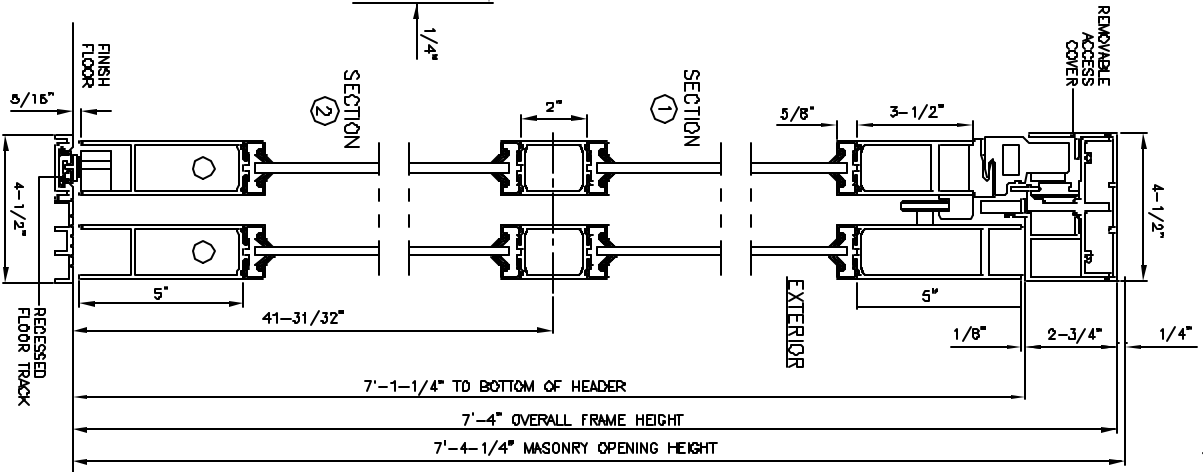
STANDARD FINISH:
 CLEAR ANODIZED - US28
 DARK BRONZE ANODIZED - DC13
 SPECIAL COLORS ARE AVAILABLE

- * FULL BREAKOUT AT ANY POSITION.
- * MAX. GLASS THICKNESS IS 1/4".
- * ALL WRITTEN DIMENSIONS ARE TO TAKE PREFERENCE OVER SCALED DIMENSIONS.
- * SPECIAL SIZES - CONSULT WITH FACTORY.

OVERALL FRAME WIDTH (A)	DOOR OPENING WIDTH (B)	DOOR WIDTH (C)	MASONRY OPENING (D)	FULL BREAKOUT OPENING (E)
(MIN) 8'-2-3/16"	32"	36-3/4"	8'-2-11/16"	97'-11/16"
(MAX) 13'-3-5/16"	48'-3/8"	53'-1/8"	13'-3'-13/16"	144'-13/16"



EXTERIOR SECTION ③



7'-1-1/4" TO BOTTOM OF HEADER
 7'-4" OVERALL FRAME HEIGHT
 7'-4-1/4" MASONRY OPENING HEIGHT