



SLIMLINE-ICU
 BI-PARTING SLIDING DOORS
 TELESCOPIC
 WITH POSITIVE LATCH
 FULL BREAKOUT
 WITH FLOOR TRACK

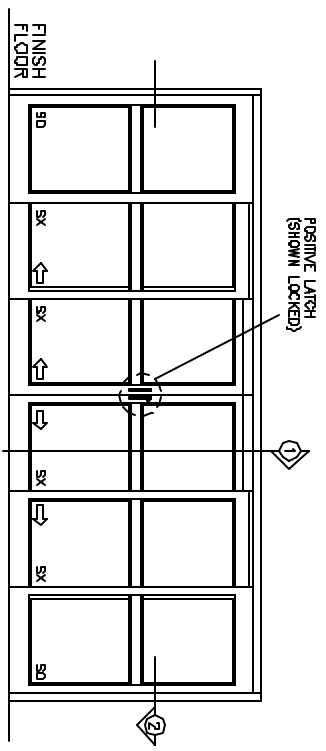
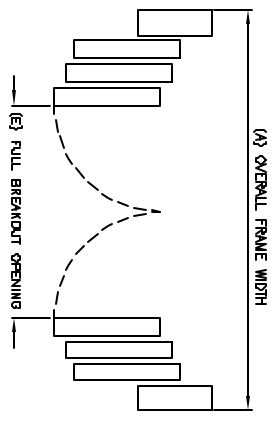
SO-SX-SX-SX-SX-SO

7350 West Wilson Ave.
 Homewood Heights, IL, 60706-4786

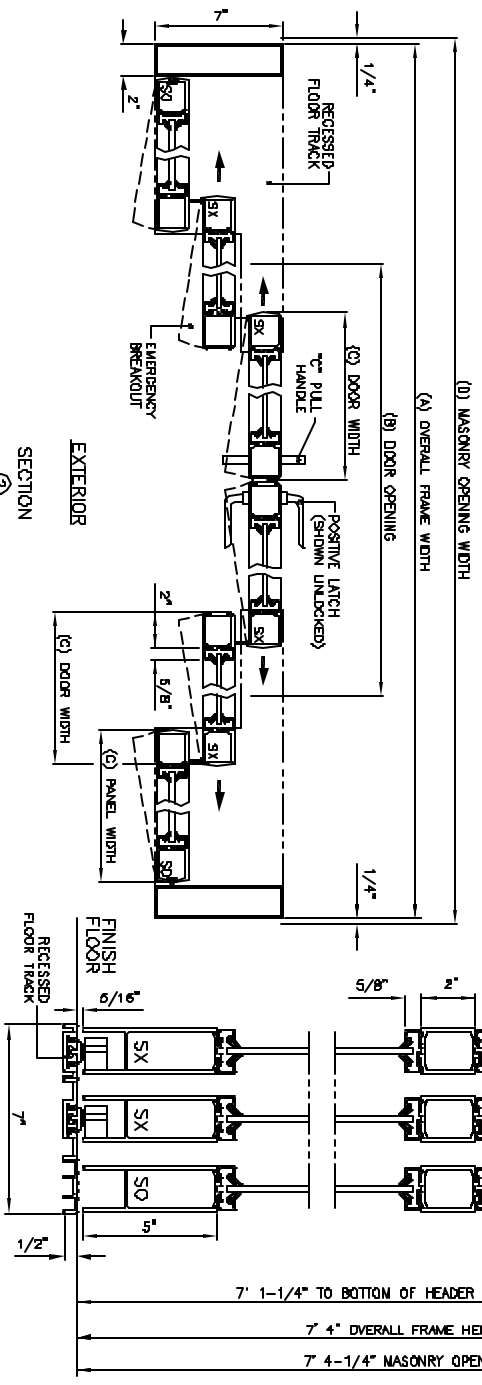
Phone: (800) 543-4635
 Fax: (708) 867-0291

www.doromatic.com

89889REV0
 OCT. 10, 2002



EXTERIOR ELEVATION



EXTERIOR SECTION 2

EXTERIOR SECTION 1

NOTES:

STANDARD PACKAGES:
 FULL BREAKOUT ON SX DOORS AND SO PANELS. HEADER 2'-3/4" X 7" FRAMES, ANGLE ON SILE SLIDING DOOR AND SHEETS. 2" MANTLE, 6" BRITISH PALE (FURNISHING) PANELS WITH 1/2" X 1/2" X 1/2" RECESSED FLOOR AND INTERIOR 1/4" DEADENING STRIP AND 1/2" X 1/2" X 1/2" RECESSED FLOOR TRACK EXTENDING 2/3 ACROSS PACKAGE FROM EACH PANEL END.

STANDARD FINISH:
 CLEAR ANODIZED - US2B
 DARK BRONZE ANODIZED - 00113
 SPECIAL COLORS ARE AVAILABLE

* FULL BREAKOUT AT ANY POSITION.
 * MAX. GLASS THICKNESS IS 1/4".
 * ALL WRITTEN DIMENSIONS ARE TO TAKE PREFERENCE OVER SCALED DIMENSIONS.
 * SIZES LARGER THAN 14' 0" - CONSULT WITH FACTORY.

OVERALL FRAME WIDTH (A)	DOOR OPENING WIDTH (B)	DOOR WIDTH (C)	MASONRY OPENING WIDTH (D)	FULL BREAKOUT OPENING (E)
(MIN) 8'-3-1/2"	5'-4-1/2"	1'-7-1/8"	8'-3-3/4"	7'-7-1/4"
(MAX) 24'	18'-1-1/4"	4'-8-5/8"	2'-4-1/2"	28'5"