



SLIMLINE-ICU
 SINGLE SLIDING DOOR - LH
 TELESCOPIC
 WITH POSITIVE LATCH
 FULL BREAKOUT
 WITH FLOOR TRACK

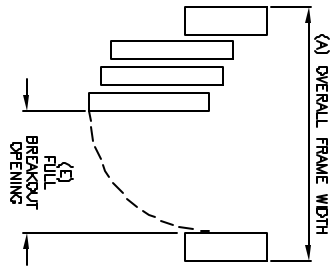
SO-SX-SX

7350 West Wilson Ave.
 Homewood Heights, IL, 60706-4786

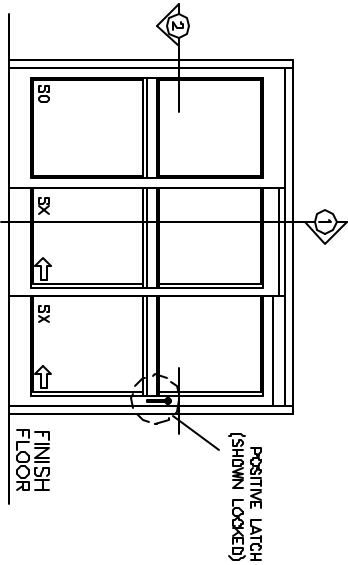
Phone: (800) 543-4635
 Fax: (708) 867-0291

www.doromatic.com

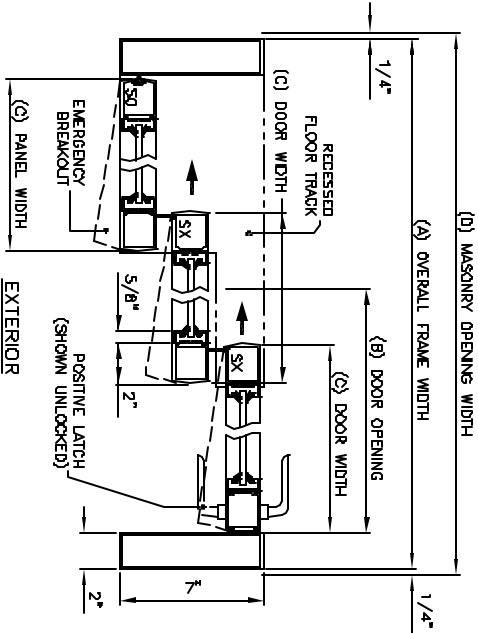
89991REV0
 OCT. 10, 2002



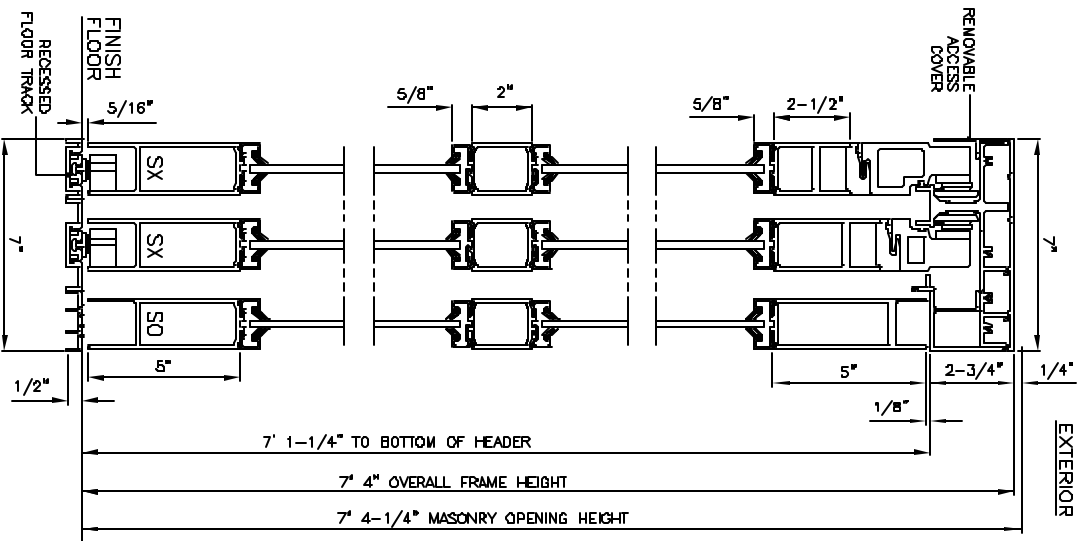
BREAKOUT DETAIL



EXTERIOR ELEVATION



SECTION 2



SECTION 1

NOTES:

STANDARD PACKAGE:
 BALL DETENTERS ON SX DOORS AND SO PANELS, HEADER 2-3/4" X 7" FRAMES,
 NARROW STILE SLIDING DOOR AND SIDELITES, 2" MOUNTING, 5" BOTTOM RAILS,
 POSITIVE LATCH HANDLES ON EXTERIOR AND INTERIOR, 1/4" GLAZING SYSTEM,
 1/2" X 7" RECESSED FLOOR TRACK EXTENDING 2/3 ACROSS PACKAGE FROM
 PANEL END.

STANDARD FINISH:
 CLEAR ANODIZED - US2B
 DARK BRONZE ANODIZED - DC13
 SPECIAL COLORS ARE AVAILABLE

* FULL BREAKOUT AT ANY POSITION,
 * MAX. GLASS THICKNESS IS 1/4".

* ALL WRITTEN DIMENSIONS ARE TO TAKE
 PREFERENCE OVER SCALED DIMENSIONS.

* SPECIAL SIZES - CONSULT WITH FACTORY.

OVERALL FRAME WIDTH (A)	DOOR OPENING WIDTH (B)	DOOR WIDTH (C)	MASONRY OPENING (D)	FULL BREAKOUT OPENING (E)
(MIN) 4'-10-3/4"	32"	19-1/2"	4'-11-1/4"	45-3/4"
(MAX) 13'-3-5/8"	99-1/4"	53-1/8"	13'-4-1/8"	148-5/8"