



SLIMLINE-ICU
 BI-PARTING SLIDING DOORS
 FULL BREAKOUT
 WITH POSITIVE LATCH
 TRACKLESS DOOR OPENING
 (FLOOR TRACK UNDER PANEL)

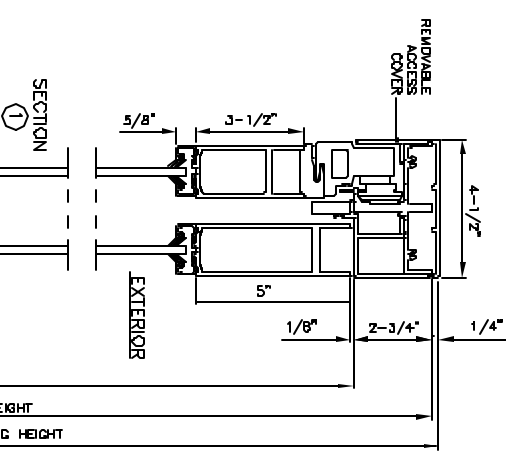
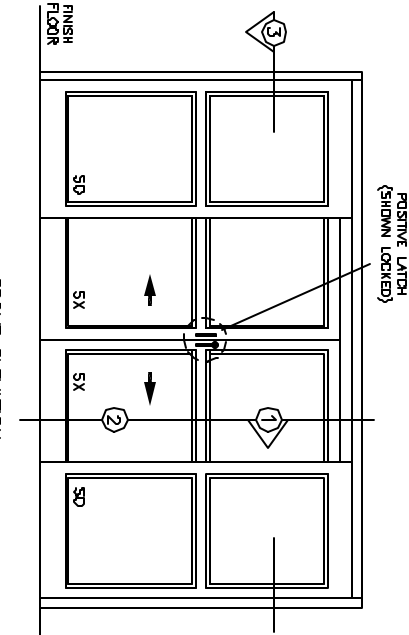
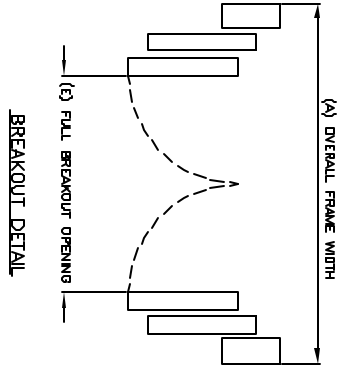
SO-SX-SX-SO

7350 West Wilson Ave.
 Homewood Heights, IL, 60706-4786

Phone: (800) 543-4635
 Fax: (708) 867-0291

www.doromatic.com

89963REV0
 OCT. 10, 2002



NOTES:

STANDARD PACKAGES:
 BAL. OPERATE ON SIX DOORS AND SO PANELS, HEADER 2-3/4" X 4-1/2", FRAMES, NARROW STILE SLIDING DOOR AND SPDLERS, 2" LANTING, 5" BOTTOM RAILS, POSITIVE LATCH HANDLES ON EXTERIOR AND INTERIOR, 1/4" GLASS SYSTEM, AND 1/2" X 4-1/2" RECESSED FLOOR TRACK IN PANEL AREA.

STANDARD FINISH:
 CLEAR ANODIZED - US28
 DARK BRONZE ANODIZED - DC13
 SPECIAL COLORS ARE AVAILABLE

* FULL BREAKOUT AT ANY POSITION.
 * MAX. GLASS THICKNESS IS 1/4".
 * ALL WRITTEN DIMENSIONS ARE TO TAKE PREFERENCE OVER SCALED DIMENSIONS.
 * SPECIAL SIZES - CONSULT WITH FACTORY.

OVERALL FRAME WIDTH (A)	DOOR OPENING WIDTH (B)	DOOR WIDTH (C)	MASONRY OPENING (D)	FULL BREAKOUT OPENING (E)
10'-0"	80"	30"	10'-0 1/2"	104-1/2"
12'-0"	82"	36"	12'-0 1/2"	128-1/2"
14'-0"	74"	42"	14'-0 1/2"	152-1/2"

