



96190-900 PENCIL BEAM SAFETY SYSTEM

Installation Instructions

DOR - O - MATIC®

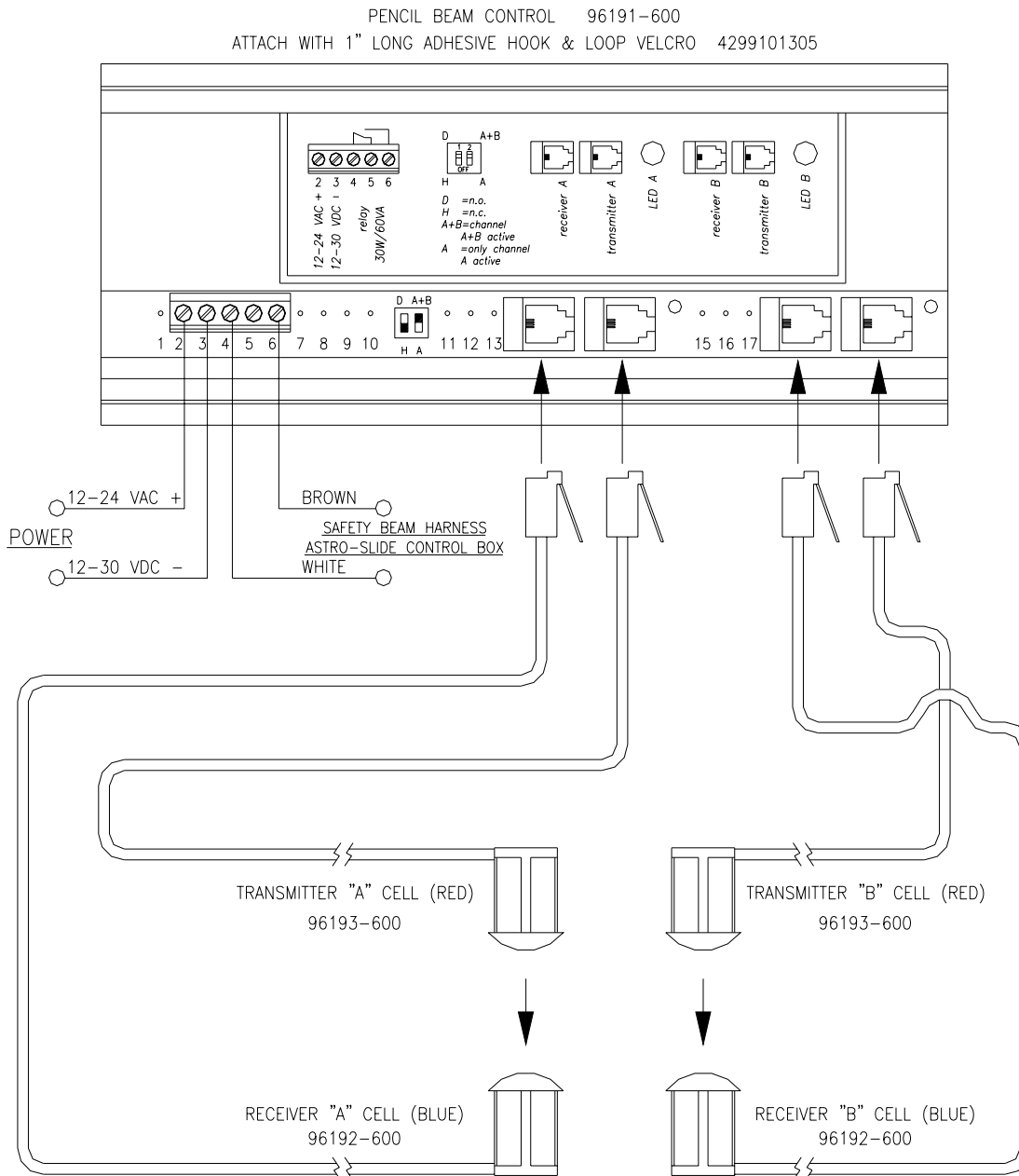
7350 W. Wilson Ave.
Harwood Heights, IL 60706

Toll Free: 1-800-543-4635
In Illinois: 708-867-7400
Sales FAX: 708-867-0291
www.doromatic.com

#96190-900 Pencil Beam Safety System Installation and Hook Up Procedure For Fail Safe Operation

GENERAL:

The #96190-900 Pencil Beam Safety System includes 2 transmitter and 2 receiver cells and a Safety Beam Control Box. The cells are color coded. The transmitter cells are red and receiver cells are blue. See below for proper wiring of the pencil beam control. This system may be used with any Dor-O-Matic control box.



NOTE:

Switch 1 - Position "D": Relay normally open.
Switch 1 - Position "H": Relay normally closed.

Switch 2 - Position "A+B": Both channel A and channel B are active.
Switch 2 - Position "A": Only channel A is active.

Switch 1 must be in position "H" and switch 2 must be in position "A+B".