



---

# 96000 Full Breakout Hurricane Package Installation Reference

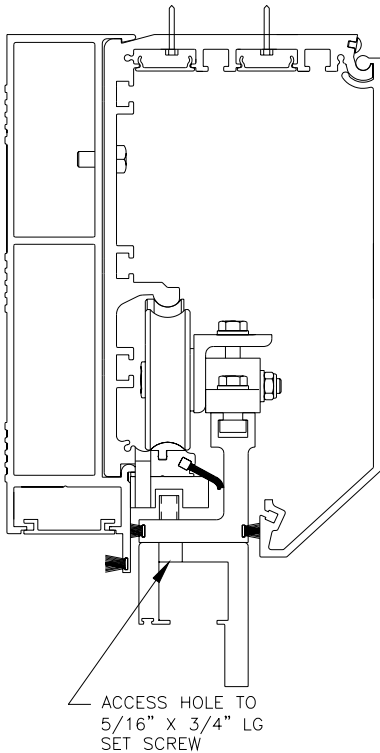
**Important: Read this reference prior to Standard Installation Manual**

## **DOR - O - MATIC®**

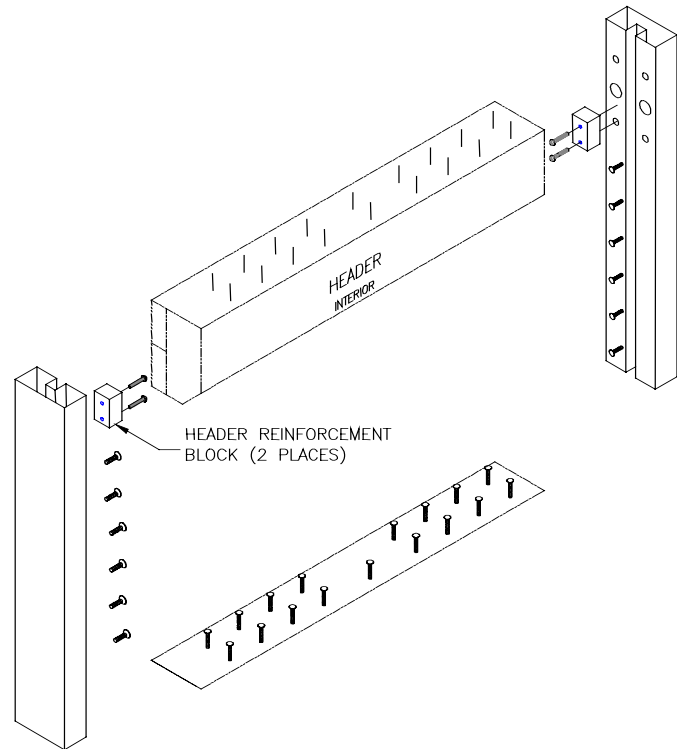
7350 W. Wilson Ave.  
Harwood Heights, IL 60706

Toll Free: 1-800-543-4635  
In Illinois: 708-867-7400  
Sales FAX: 708-867-0291  
[www.doromatic.com](http://www.doromatic.com)

## INSTALLATION INSTRUCTIONS



**Figure 1**



**Figure 2**

### **A. Header Reinforcement Blocks (Figure 2)**

1. Install blocks from part bag 87456-000 on jamb tube prior to installing header to the frame.
2. To install block (Figure 2), fasten block through the lower hole to lower rivnut on the interior side of the jamb tube using the button head phillips head fastener. Keeping the block level with the jamb tube, use the self-drilling self-tapping screw to fasten the block to the jamb through the second hole.
3. Secure the jamb tube to the header using the three (3) standard 1/4"-20 fasteners while inserting the block into the header extension extrusion's lower cavity.

### **B. Anchors and Installation of Frame.**

1. #14 Sheet Metal Screws, into wood bucks or wood structure. 1 1/2" minimum penetration.  
Header- Locate the row nearest the cover 14 1/4" from the jambs and 10" on center. Locate the second row 6 1/4" from jambs and 10" on center. Add 1 additional at meeting stile location.  
Threshold- Mount 1 2 5/8" from each end and 5 1/2" on center. Locate two additional on either side at the flush bolt location and three at meeting stiles.  
Jambs- Locate 2 1/4" from ends and 15" on center.
2. 1/4" Tapcons, through 1By wood bucks into masonry or directly into masonry, 1 1/4" minimum penetration into masonry or concrete.  
Header- Locate the row nearest the cover 14 1/4" from the jambs and 16" on center. Locate second row 6 1/4" from jambs and 16" on center. Add one additional at meeting stile location.  
Threshold- Mount 1 2 5/8" from each end and 8" on center. Locate two additional on either side at the flush bolt location and three at meeting stiles.  
Jambs- Locate 2 1/4" from ends and 18" on center.

3. 1/4" Teks or Self-Drilling Screws, into metal structures (Steel or Aluminum, 1/8" thick minimum)  
Header- Locate the row nearest the cover 14 1/4" from the jambs and 16" on center. Locate the second row 6 1/4" from jambs and 16" on center. Add one additional at meeting stile location.  
Threshold- Mount 1 2 5/8" from each end and 8" on center. Locate two additional on either side at the flush bolt location and three at meeting stiles.  
Jambs- Locate 2 1/4" from ends and 18" on center.

### **C. Set Screw Adjustment (Figure 1)**

1. Complete standard installation. See manual 96000-984.
2. With doors fully closed, break out doors and panels to expose access holes in carriers.
3. Turn screws clockwise until screws bottom out on carrier reinforcement blocks (Item 32, Figure 3).
4. Rotate counterclockwise one half turn.
5. Allow doors to close to ensure there is no interference with the carrier reinforcement blocks.

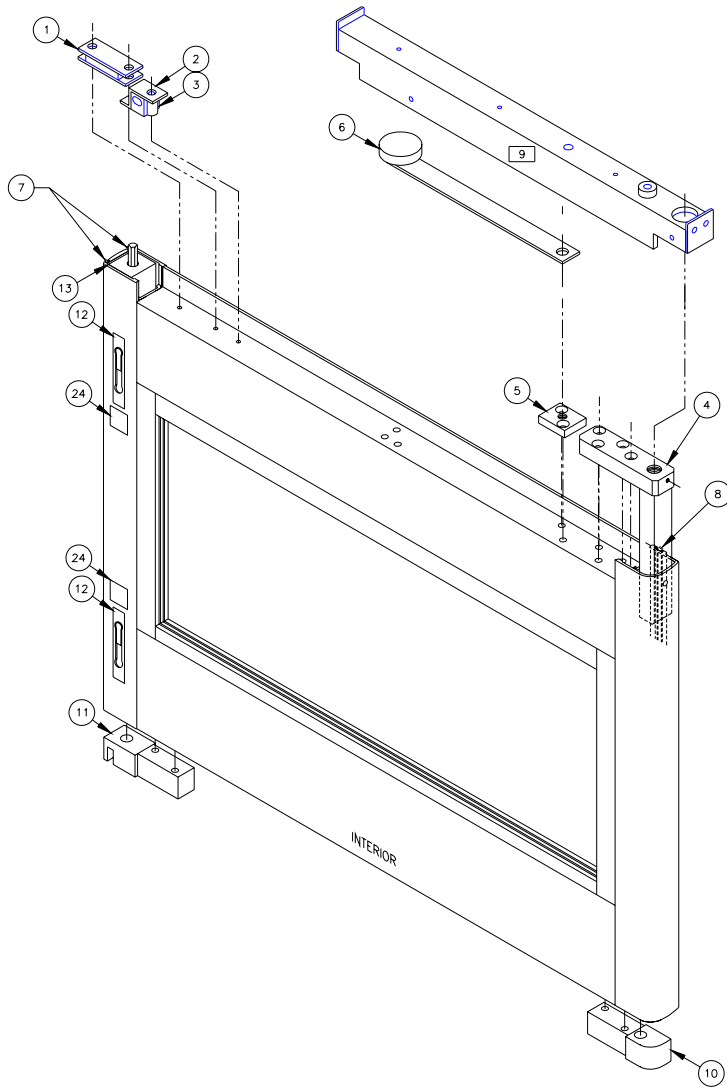
### **D. Hurricane Lock Instructions**

Instruct customer to lock doors and panels using thumb turn lock (Item 19, page 6) and both flush bolts (Item 12, all doors and panels) to secure building and in case of hurricane. Ensure that the lock label (Item 24, all doors and panels) is secured to the stiles with the flush bolts.

Locks must be released for safe operation during business hours.

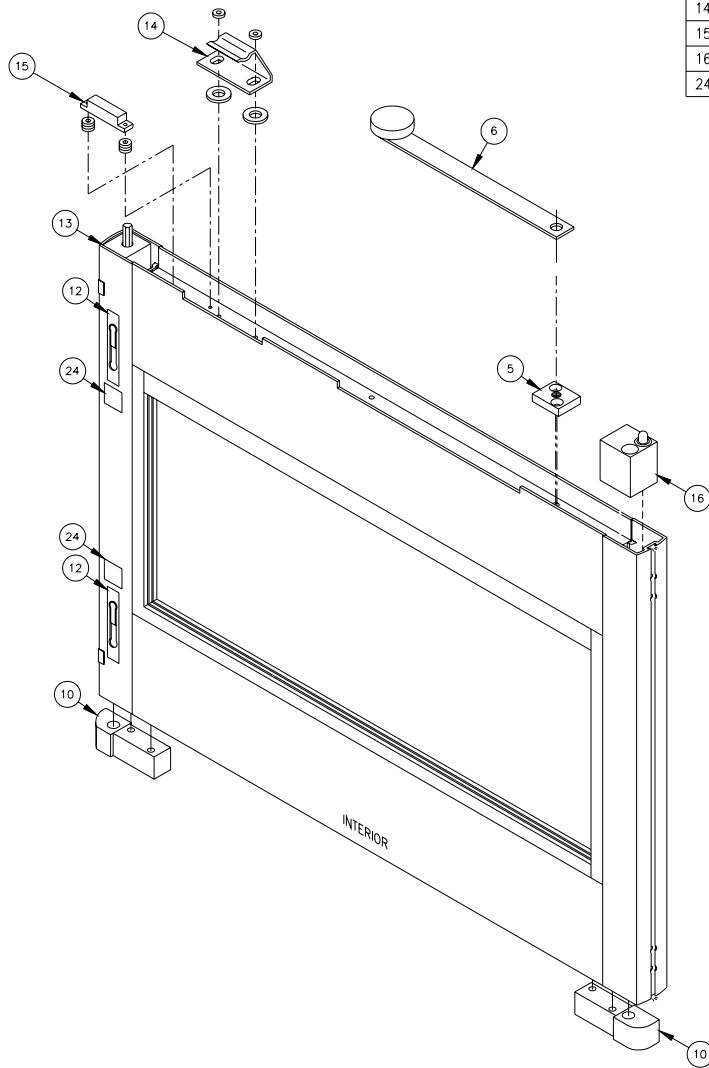
## Doors and Panels

ITEM	PART No.	DESCRIPTION
1	4204101996	MAGNET
2	4204100708	BRACKET CLIP
3	4204100707	HANGER BLOCK
4	4204120520	COMPOSITE ARM ASSEMBLY
5	4204120521	SPACER BLOCK
6	4204110666	DOOR LIMIT ARM
7	4204108898	WEATHERSTRIP
8	4204106653	WEATHERSTRIP, .437 x .470
9	96282-0XX	CARRIER ASSEMBLY, LH BI-PART
10	96461-900	PIVOT BLOCK ASSEMBLY
11	96488-900	PIVOT BLOCK ASSEMBLY
12	4236100891	FLUSH BOLT ASSEMBLY
13	96462-100	STILE LOCK BLOCK
24	96411-600	LOCK LABEL



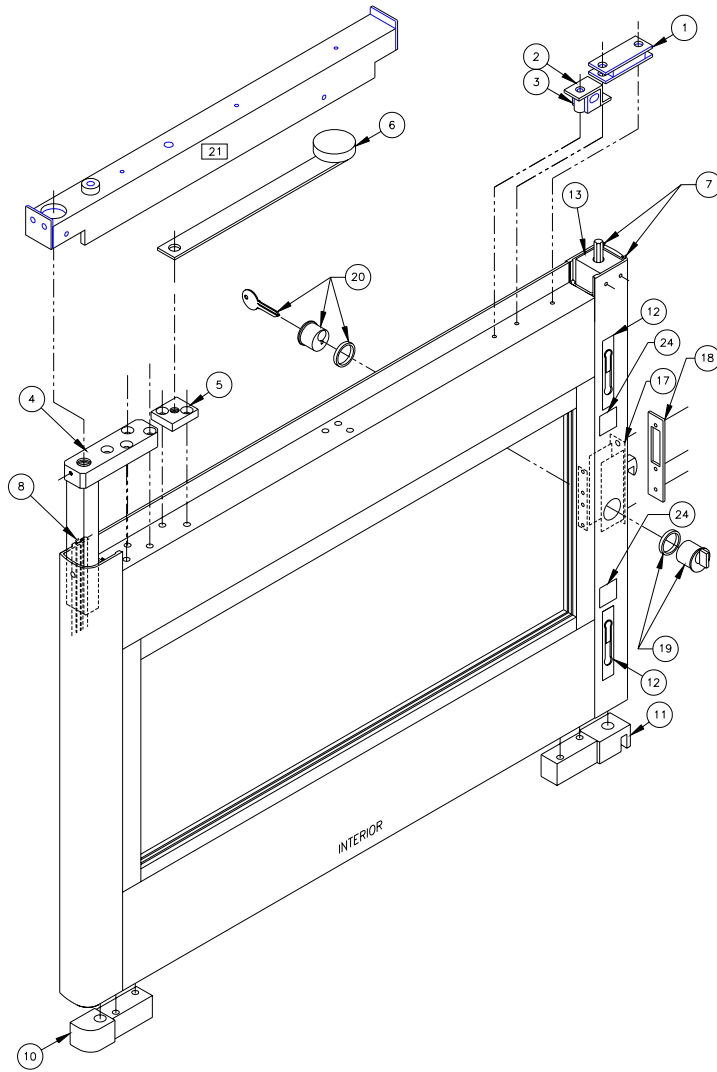
**Figure 3**  
**Left Door Assembly**

ITEM	PART No.	DESCRIPTION
5	4204100244	SPACER BLOCK
6	4204110674	PANEL LIMIT ARM
10	96461-900	PIVOT BLOCK ASSEMBLY
12	4236100891	FLUSH BOLT ASSEMBLY
13	96462-100	STILE LOCK BLOCK
14	4204120309	CATCH BRACKET
15	4201102854	MAGNET - #37 REED
16	96463-902	TOP PIVOT ASSEMBLY, LH PANEL
24	96411-600	LOCK LABEL



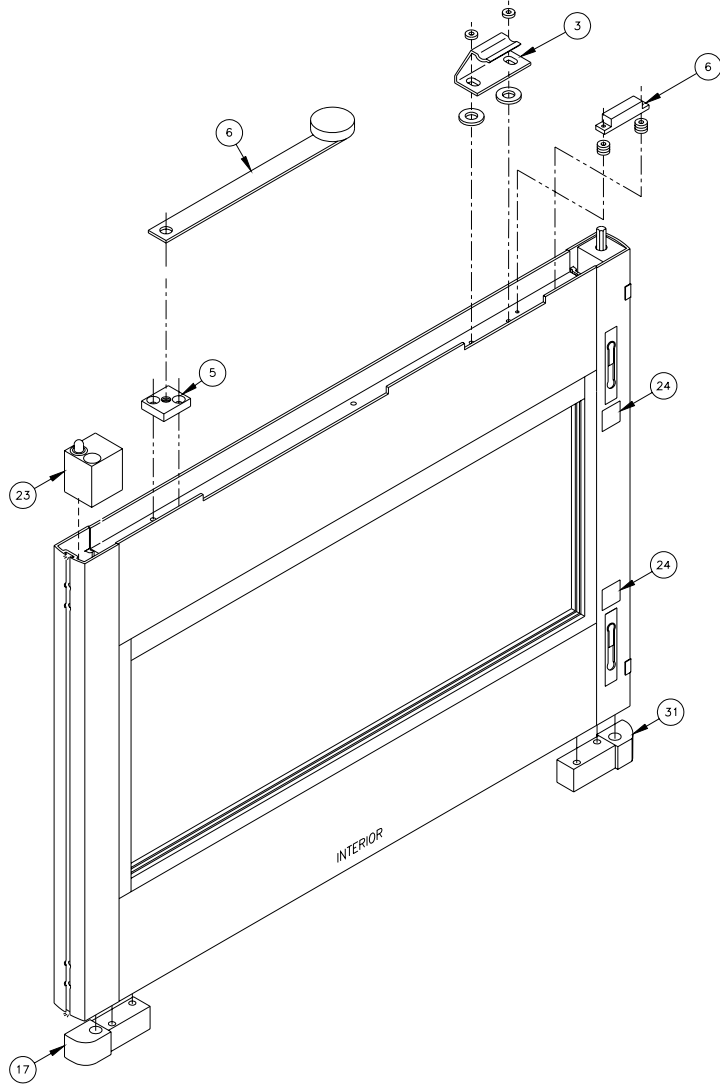
**Figure 4**  
**Left Panel Assembly**

ITEM	PART No.	DESCRIPTION
1	4204101996	MAGNET
2	4204100708	BRACKET CLIP
3	4204100707	HANGER BLOCK
4	4204120520	COMPOSITE ARM ASSEMBLY
5	4204120521	SPACER BLOCK
6	4204110666	DOOR LIMIT ARM
7	4204108898	WEATHERSTRIP
8	4204106653	WEATHERSTRIP, .437 x .470
9	96282-0XX	CARRIER ASSEMBLY, LH BI-PART
10	96461-900	PIVOT BLOCK ASSEMBLY
11	96488-900	PIVOT BLOCK ASSEMBLY
12	4236100891	FLUSH BOLT ASSEMBLY
13	96462-100	STILE LOCK BLOCK
17	4204116070	DEAD LOCK ASSEMBLY
18	4204117089	FACE PLATE
19	4204101382	THUMB TURN
20	4204101170	LOCKING CYLINDER
21	96296-0XX	CARRIER ASSEMBLY, RH BI-PART
24	96411-600	LOCK LABEL



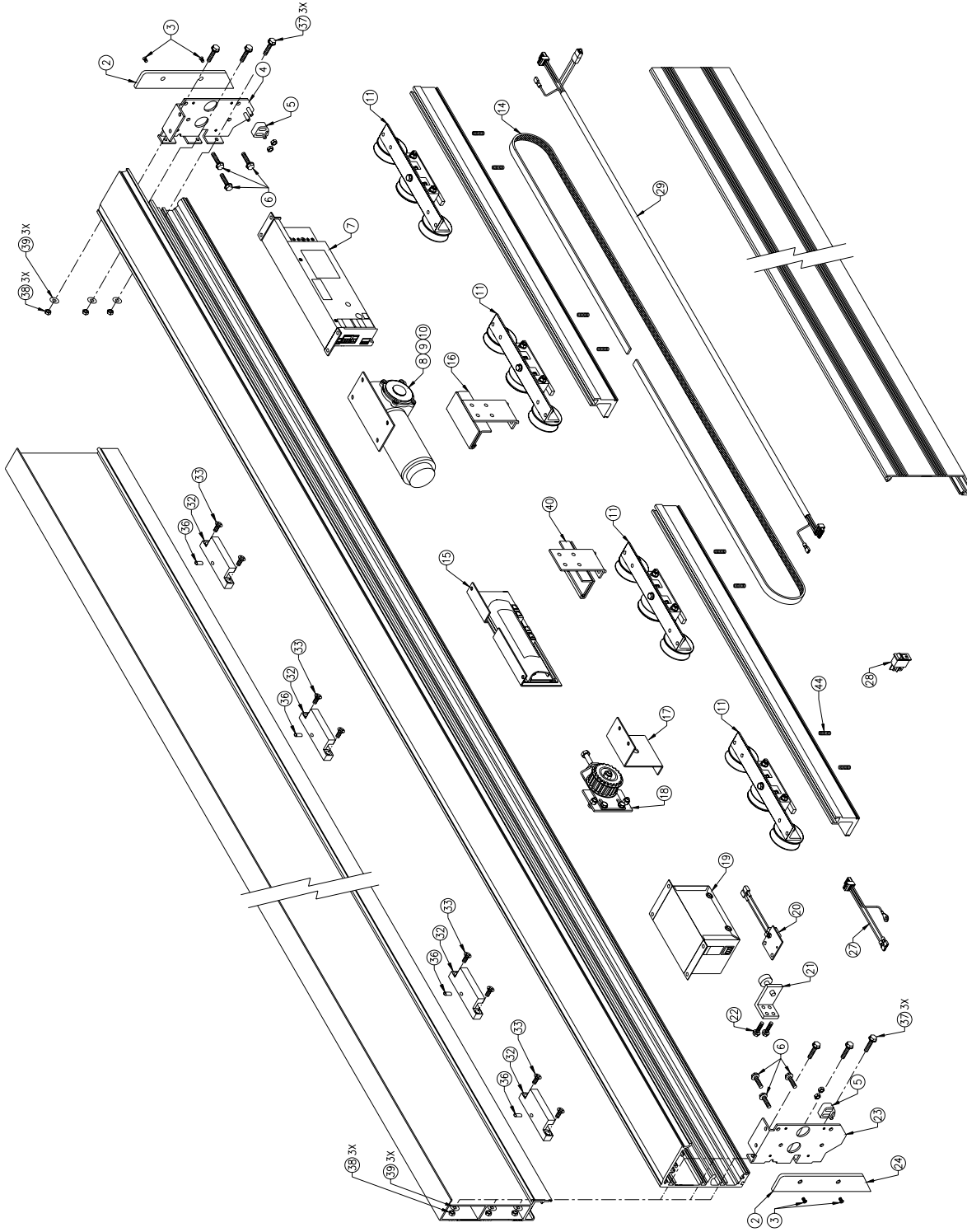
**Figure 5**  
**Right Door Assembly**

ITEM	PART No.	DESCRIPTION
5	4204100244	SPACER BLOCK
6	4204110674	PANEL LIMIT ARM
10	96461-900	PIVOT BLOCK ASSEMBLY
12	4236100891	FLUSH BOLT ASSEMBLY
13	96462-100	STILE LOCK BLOCK
14	4204120309	CATCH BRACKET
15	4201102854	MAGNET - #37 REED
23	96463-902	TOP PIVOT ASSEMBLY, LH PANEL
24	96411-600	LOCK LABEL



**Figure 6**  
**Right Panel Assembly**

# Header Assembly



ITEM	PART No.	DESCRIPTION
1	96189-100	END CAP, RIGHT HAND
2	96076-600	END CAP SCREW
3	96122-000	END BRACKET, RIGHT HAND
4	96219-100	COVER LOCK
5	96077-600	HEADER MOUNT SCREW
6	96010-900	CONTROL BOX
7	96175-000	MOTOR & PLATE ASSEMBLY
8	96500-000	MOTOR & PLATE ASSEMBLY, FAIL SAFE
9	96550-000	MOTOR & PLATE ASSEMBLY, FAIL SECURE
10	96135-000	ROLLER ASSEMBLY
11	4204115297	BELTING
12	96185-000	PENCIL BEAM ASSEMBLY
13	96110-000	BELT CLAMP ASSEMBLY
14	96316-600	TENSIONER COVER
15	96005-900	TRANSFORMER BOX
16	96175-000	BUMPER STOP ASSEMBLY
17	961331614	M6 x 1 x 14mm HEX HEAD BOLT
18	96211-000	END BRACKET, LEFT HAND
19	96188-100	END CAP, LEFT HAND
20	96172-000	TRANSFORMER - SWITCH CABLE
21	76307-600	ROCKER SWITCH
22	961710000	TRANSFORMER - CONTROL CABLE
23	96404-1XX	CARRIER REINFORCEMENT BLOCK
24	4299100747	1/4-20 x 3/4" FL PH HD SCREW (ZINC)
25	4299100129	PIN, 1/4" X 1" ROLL
26	961331625	M6 X 1 X 25mm SCREW
27	950227006	M6, NUT
28	4299100791	WASHER
29	96115-000	BELT CLAMP ASSY
30	96408-600	5/16-18 X 3/4 SET SCREW

Figure 7  
Header Assembly